

# Anti-CD30 / TNFRSF8 Antibody

Recombinant Mouse Monoclonal Antibody  
Catalog # AH13622

## Product Information

---

<b>Application</b>	IHC-P, IF, FC
<b>Primary Accession</b>	<a href="#">P28908</a>
<b>Other Accession</b>	<a href="#">1314</a>
<b>Reactivity</b>	Human
<b>Host</b>	Mouse
<b>Clonality</b>	Monoclonal
<b>Isotype</b>	Mouse / IgG1, kappa
<b>Clone Names</b>	rKi-1/779

## Additional Information

---

<b>Other Names</b>	CD30L receptor, Cytokine receptor CD30, Ki-1 antigen, Lymphocyte activation antigen CD30, Tumor necrosis factor receptor superfamily member 8 (TNFRSF8)
<b>Application Note</b>	Flow Cytometry (0.5-1ug/million cells); Immunofluorescence (1-2ug/ml); ,Immunohistology (Formalin-fixed) (0.5-1ug/ml for 30 minutes at RT),(Staining of formalin-fixed tissues requires boiling tissue sections in 1mM EDTA, pH 7.5-8.5, for 10-20 min followed by cooling at RT for 20 minutes),Optimal dilution for a specific application should be determined.
<b>Format</b>	200ug/ml of recombinant MAb purified by Protein A/G. Prepared in 10mM PBS with 0.05% BSA & 0.05% azide. Also available WITHOUT BSA & azide at 1.0mg/ml.
<b>Storage</b>	Store at 2 to 8°C.Antibody is stable for 24 months.
<b>Precautions</b>	Anti-CD30 / TNFRSF8 Antibody is for research use only and not for use in diagnostic or therapeutic procedures.

## Protein Information

---

### Background

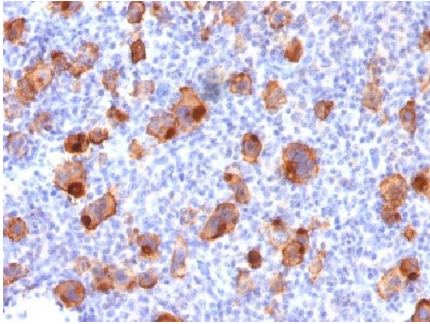
---

Recognizes a single chain glycoprotein of 105/120kDa, identified as CD30/Ki-1. CD30 is synthesized as a 90kDa precursor, which is processed in the Golgi complex into a membrane-bound phosphorylated mature 105/120kDa glycoprotein. In Hodgkin s disease, CD30/Ki-1 antigen is expressed by mononuclear-Hodgkin and multinucleated Reed-Sternberg cells. It is also expressed by the tumor cells of a majority of anaplastic large cell lymphomas as well as by a varying proportion of activated T and B cells. This MAb distinguishes large cell lymphomas derived from activated lymphoid cells from histiocytic malignancies and lymphomas

derived from resting and precursor lymphoid cells or from anaplastic carcinomas. About one third of the Ki-1 positive lymphomas lack the leukocyte common antigen (CD45).

## Images

---



Formalin-fixed, paraffin-embedded human Hodgkin's Lymphoma stained with CD30 Recombinant Mouse Monoclonal Antibody (rKi-1/779).

Please note: All products are 'FOR RESEARCH USE ONLY. NOT FOR USE IN DIAGNOSTIC OR THERAPEUTIC PROCEDURES'.