

# Anti-CD34 Antibody

Recombinant Rabbit Monoclonal Antibody

Catalog # AH13630

## Product Information

---

<b>Application</b>	WB, IHC-P, IF, FC
<b>Primary Accession</b>	<a href="#">P28906</a>
<b>Other Accession</b>	<a href="#">374990</a>
<b>Reactivity</b>	Human, Rat
<b>Host</b>	Rabbit
<b>Clonality</b>	Monoclonal
<b>Isotype</b>	Rabbit / IgG, kappa
<b>Clone Names</b>	HPCA1/1806R
<b>Calculated MW</b>	40716

## Additional Information

---

<b>Gene ID</b>	947
<b>Other Names</b>	Hematopoietic Progenitor Cell Antigen, HPCA1, Mucosialin
<b>Application Note</b>	Flow Cytometry (0.5-1ug/million cells); ,Immunofluorescence (0.5-1ug/ml); Western Blotting (0.5-1ug/ml);,Immunohistology (Formalin-fixed) (2-4ug/ml for 30 min at RT),(Staining of formalin-fixed tissues requires boiling tissue sections in 10mM Tris with 1mM EDTA, pH 9.0, for 10-20 min followed by cooling at RT for 20 minutes),Optimal dilution for a specific application should be determined.
<b>Format</b>	200ug/ml of recombinant MAb purified by Protein A/G. Prepared in 10mM PBS with 0.05% BSA & 0.05% azide. Also available WITHOUT BSA & azide at 1.0mg/ml.
<b>Storage</b>	Store at 2 to 8°C.Antibody is stable for 24 months.
<b>Precautions</b>	Anti-CD34 Antibody is for research use only and not for use in diagnostic or therapeutic procedures.

## Protein Information

---

<b>Name</b>	CD34
<b>Function</b>	Possible adhesion molecule with a role in early hematopoiesis by mediating the attachment of stem cells to the bone marrow extracellular matrix or directly to stromal cells. Could act as a scaffold for the attachment of lineage specific glycans, allowing stem cells to bind to lectins expressed by stromal cells or other marrow components. Presents carbohydrate ligands to

selectins.

**Cellular Location**

Membrane; Single-pass type I membrane protein.

**Tissue Location**

Selectively expressed on hematopoietic progenitor cells and the small vessel endothelium of a variety of tissues

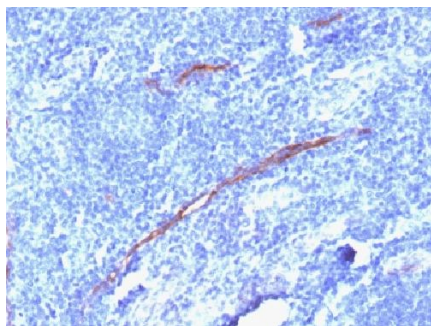
## Background

---

This antibody recognizes a transmembrane, heavily glycosylated protein of 90-120kDa, which is identified as CD34. Its expression is a hallmark for identifying pluripotent hematopoietic stem or progenitor cells. Its expression is gradually lost as lineage committed progenitors differentiate. CD34 is a marker of choice for staining blasts in acute myeloid leukemia. In addition, it is expressed by soft tissue tumors, such as solitary fibrous tumor and gastrointestinal stromal tumor. CD34 expression is also found in vascular endothelium. Additionally, proliferating endothelial cells overexpress this molecule than the non-proliferating endothelial cells. Anti-CD34 labels > 85% of angiosarcoma and Kaposi s sarcoma, but shows low specificity.

## Images

---



Formalin-fixed, paraffin-embedded human Tonsil stained with CD34 Recombinant Rabbit Monoclonal Antibody (HPCA1/1806R)

Please note: All products are 'FOR RESEARCH USE ONLY. NOT FOR USE IN DIAGNOSTIC OR THERAPEUTIC PROCEDURES'.