

# Anti-CD79a Antibody

Mouse Monoclonal Antibody

Catalog # AH13642

## Product Information

---

<b>Application</b>	WB, IF, FC
<b>Primary Accession</b>	<a href="#">P11912</a>
<b>Other Accession</b>	<a href="#">631567</a>
<b>Reactivity</b>	Human
<b>Host</b>	Mouse
<b>Clonality</b>	Monoclonal
<b>Isotype</b>	Mouse / IgG3
<b>Clone Names</b>	IGA/1406
<b>Calculated MW</b>	25038

## Additional Information

---

<b>Gene ID</b>	973
<b>Other Names</b>	B lymphocyte-specific MB1 protein, B-cell antigen receptor complex-associated protein alpha chain, CD79a molecule immunoglobulin associated alpha, Ig-alpha, IGA, IgM-alpha, Immunoglobulin-associated alpha, Ly54, MB-1 membrane glycoprotein, Membrane-bound immunoglobulin-associated protein, Surface IgM-associated protein
<b>Application Note</b>	Flow Cytometry (0.5-1ug/million cells); ,Immunofluorescence (0.5-1ug/ml); ,Western Blotting (0.5-1ug/ml),Optimal dilution for a specific application should be determined.
<b>Format</b>	200ug/ml of Ab purified from Bioreactor Concentrate by Protein A/G. Prepared in 10mM PBS with 0.05% BSA & 0.05% azide. Also available WITHOUT BSA & azide at 1.0mg/ml.
<b>Storage</b>	Store at 2 to 8°C.Antibody is stable for 24 months.
<b>Precautions</b>	Anti-CD79a Antibody is for research use only and not for use in diagnostic or therapeutic procedures.

## Protein Information

---

<b>Name</b>	CD79A
<b>Synonyms</b>	IGA, MB1
<b>Function</b>	Required in cooperation with CD79B for initiation of the signal transduction cascade activated by binding of antigen to the B- cell antigen receptor

complex (BCR) which leads to internalization of the complex, trafficking to late endosomes and antigen presentation. Also required for BCR surface expression and for efficient differentiation of pro- and pre-B-cells. Stimulates SYK autophosphorylation and activation. Binds to BLNK, bringing BLNK into proximity with SYK and allowing SYK to phosphorylate BLNK. Also interacts with and increases activity of some Src-family tyrosine kinases. Represses BCR signaling during development of immature B- cells.

#### Cellular Location

Cell membrane; Single-pass type I membrane protein. Note=Following antigen binding, the BCR has been shown to translocate from detergent-soluble regions of the cell membrane to lipid rafts although signal transduction through the complex can also occur outside lipid rafts.

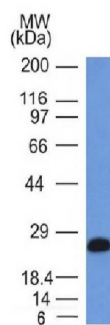
#### Tissue Location

B-cells.

## Background

A disulphide-linked heterodimer, consisting of mb-1 (or CD79a) and B29 (or CD79b) polypeptides, is non-covalently associated with membrane-bound immunoglobulins on B cells. This complex of mb-1 and B29 polypeptides and immunoglobulin constitute the B cell Ag receptor. CD79a first appears at pre B cell stage, early in maturation, and persists until the plasma cell stage where it is found as an intracellular component. CD79a is found in the majority of acute leukemias of precursor B cell type, in B cell lines, B cell lymphomas, and in some myelomas. It is not present in myeloid or T cell lines. Anti-CD79a is generally used to complement anti-CD20 especially for mature B-cell lymphomas after treatment with Rituximab (anti-CD20). This antibody will stain many of the same lymphomas as anti-CD20, but also is more likely to stain B-lymphoblastic lymphoma/leukemia than is anti-CD20. Anti-CD79a also stains more cases of plasma cell myeloma and occasionally some types of endothelial cells as well.

## Images



Western Blot of Ramos Cell Lysate using CD79a Monoclonal Antibody (IGA/1406).

Please note: All products are 'FOR RESEARCH USE ONLY. NOT FOR USE IN DIAGNOSTIC OR THERAPEUTIC PROCEDURES'.