

Anti-Lewis Y (Tumor Marker) Antibody

Mouse Monoclonal Antibody

Catalog # AH13684

Product Information

Application	IHC-P, IF, FC
Reactivity	Human
Host	Mouse
Clonality	Monoclonal
Isotype	Mouse / IgG1, kappa
Clone Names	LWY/1463

Additional Information

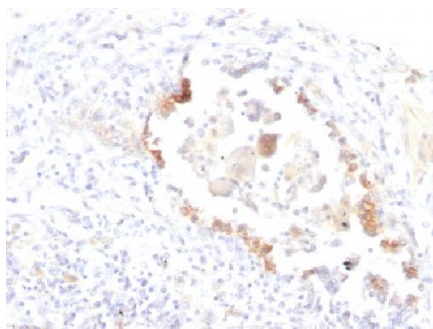
Other Names	Lewis Y antigen
Application Note	Flow Cytometry (0.5-1ug/million cells); Immunofluorescence (0.5-1ug/ml); Immunohistology (Formalin-fixed) (0.5-1.0ug/ml for 30 minutes at RT)(Staining of formalin-fixed tissues requires boiling tissue sections in 10mM citrate buffer, pH 6.0, for 10-20 min followed by cooling at RT for 20 minutes)Optimal dilution for a specific application should be determined.
Format	200ug/ml of Ab purified from Bioreactor Concentrate by Protein A/G. Prepared in 10mM PBS with 0.05% BSA & 0.05% azide. Also available WITHOUT BSA & azide at 1.0mg/ml.
Storage	Store at 2 to 8°C.Antibody is stable for 24 months.
Precautions	Anti-Lewis Y (Tumor Marker) Antibody is for research use only and not for use in diagnostic or therapeutic procedures.

Background

This antibody recognizes a carbohydrate epitope present on tumor-associated Lewis Y antigen (Fucalpha1-2Galbeta1-4/3[Fucalpha1-3/4]GlcNAcbeta-). Lewis Y is expressed in large bowel tumors and colorectal carcinomas. It may be useful in the classification of human renal and bladder tumors. The Lewis Y antigen has been evaluated as a clinical marker for the diagnosis and prognosis of cholangiocarcinoma, hepatocellular carcinoma and breast cancer.

Images

Formalin-fixed, paraffin-embedded human Lung Carcinoma stained with Lewis Y Monoclonal Antibody (LWY/1463).



Please note: All products are 'FOR RESEARCH USE ONLY. NOT FOR USE IN DIAGNOSTIC OR THERAPEUTIC PROCEDURES'.