

# Anti-CA19-9/Sialyl Lewisa Antibody

Recombinant Rabbit Monoclonal Antibody

Catalog # AH13692

## Product Information

---

<b>Application</b>	IHC-P, IF, FC
<b>Reactivity</b>	Human
<b>Host</b>	Rabbit
<b>Clonality</b>	Monoclonal
<b>Isotype</b>	Rabbit / IgG, kappa
<b>Clone Names</b>	CA19.9/1390R

## Additional Information

---

<b>Other Names</b>	CA19.9, Ovarian tumor antigen, Pancreatic tumor antigen, Sialyl Lewis a
<b>Application Note</b>	Flow Cytometry (0.5-1ug/million cells); Immunofluorescence (0.5-1ug/ml); Immunohistology (Formalin-fixed) (5-10ug/ml for 30 minutes at RT) (Staining of formalin-fixed tissues requires boiling tissue sections in 10mM Citrate Buffer, pH 6.0, for 10-20 min followed by cooling at RT for 20 minutes) Optimal dilution for a specific application should be determined.
<b>Format</b>	200ug/ml of Ab purified by Protein A column. Prepared in 10mM PBS with 0.05% BSA & 0.05% azide. Also available WITHOUT BSA and Azide at 1.0mg/ml.
<b>Storage</b>	Store at 2 to 8°C. Antibody is stable for 24 months.
<b>Precautions</b>	Anti-CA19-9/Sialyl Lewisa Antibody is for research use only and not for use in diagnostic or therapeutic procedures.

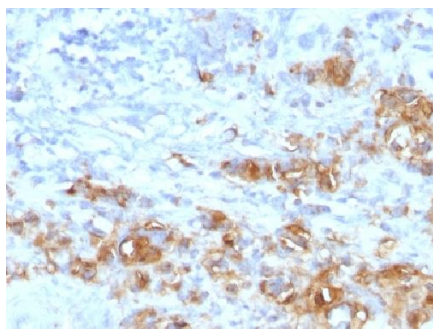
## Background

---

CA19-9, a carbohydrate epitope expressed on a high MW (>400kDa) mucin glycoprotein, is a sialyl Lewisa structure which is synthesized from type 1 blood group precursor chains and is present in individuals expressing the Lewisa and/or Lewisb blood group antigens. In normal tissues, sialyl Lewisa antigen is present in ductal epithelium of the breast, kidney, salivary gland, and sweat glands. Its expression is greatly enhanced in serum as well as in the majority of tumor cells in gastrointestinal (GI) carcinomas, including adenocarcinomas of the stomach, intestine, and pancreas. Preoperative elevated CA19-9 levels in patients with stage I pancreatic carcinoma decrease to normal values following surgery. When used serially, CA19-9 can predict recurrence of disease prior to radiographic or clinical findings. This MAb is excellent for staining of formalin-fixed, paraffin-embedded tissues.

## Images

---



Formalin-fixed, paraffin-embedded human Gastric Carcinoma stained with CA19-9 Recombinant Rabbit Monoclonal Antibody (CA19.9/1390R).

Please note: All products are 'FOR RESEARCH USE ONLY. NOT FOR USE IN DIAGNOSTIC OR THERAPEUTIC PROCEDURES'.