

# ZNF394 antibody - N-terminal region

Rabbit Polyclonal Antibody

Catalog # AI10005

## Product Information

---

<b>Application</b>	WB, IHC
<b>Primary Accession</b>	<a href="#">Q53GI3</a>
<b>Other Accession</b>	<a href="#">Q53GI3</a> , <a href="#">NP_115540</a> , <a href="#">NM_032164</a>
<b>Reactivity</b>	Human, Horse
<b>Predicted</b>	Human
<b>Host</b>	Rabbit
<b>Clonality</b>	Polyclonal
<b>Calculated MW</b>	64256

## Additional Information

---

<b>Gene ID</b>	84124
<b>Alias Symbol</b>	FLJ12298, ZKSCAN14
<b>Other Names</b>	Zinc finger protein 394, Zinc finger protein with KRAB and SCAN domains 14, ZNF394, ZKSCAN14
<b>Target/Specificity</b>	ZNF394 belongs to the krueppel C2H2-type zinc-finger protein family and may be involved in transcriptional regulation.
<b>Format</b>	Liquid. Purified antibody supplied in 1x PBS buffer with 0.09% (w/v) sodium azide and 2% sucrose.
<b>Reconstitution &amp; Storage</b>	Add 50 ul of distilled water. Final anti-ZNF394 antibody concentration is 1 mg/ml in PBS buffer with 2% sucrose. For longer periods of storage, store at -20°C. Avoid repeat freeze-thaw cycles.
<b>Precautions</b>	ZNF394 antibody - N-terminal region is for research use only and not for use in diagnostic or therapeutic procedures.

## Protein Information

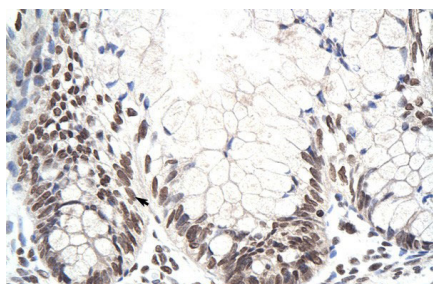
---

<b>Name</b>	ZNF394
<b>Synonyms</b>	ZKSCAN14
<b>Function</b>	May be involved in transcriptional regulation.
<b>Cellular Location</b>	Nucleus {ECO:0000255 PROSITE-ProRule:PRU00187}.

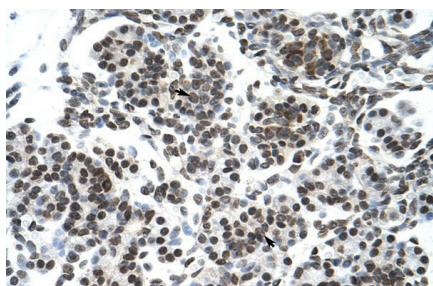
## Background

This is a rabbit polyclonal antibody against ZNF394. It was validated on Western Blot and immunohistochemistry by Abgent. At Abgent we manufacture rabbit polyclonal antibodies on a large scale (200-1000 products/month) of high throughput manner. Our antibodies are peptide based and protein family oriented. We usually provide antibodies covering each member of a whole protein family of your interest. We also use our best efforts to provide you antibodies recognize various epitopes of a target protein. For availability of antibody needed for your experiment, please inquire (sales@abgent.com).

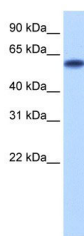
## Images



ZNF394 antibody - N-terminal region (AI10005) in Human Intestine cells using Immunohistochemistry  
Rabbit Anti-ZNF394 Antibody  
Paraffin Embedded Tissue: Human Intestine  
Cellular Data: Epithelial cells of intestinal villas  
Antibody Concentration: 4.0-8.0 µg/ml  
Magnification: 400X



ZNF394 antibody - N-terminal region (AI10005) in Human Pancreas cells using Immunohistochemistry  
Rabbit Anti-ZNF394 Antibody  
Paraffin Embedded Tissue: Human Pancreas  
Cellular Data: Epithelial cells of pancreatic acinus  
Antibody Concentration: 4.0-8.0 µg/ml  
Magnification: 400X



ZNF394 antibody - N-terminal region (AI10005) in Transfected 293T cells using Western Blot  
WB Suggested Anti-ZNF394 Antibody Titration: 0.2-1 µg/ml  
ELISA Titer: 1:312500  
Positive Control: Transfected 293T

Please note: All products are 'FOR RESEARCH USE ONLY. NOT FOR USE IN DIAGNOSTIC OR THERAPEUTIC PROCEDURES'.