

# TAL1 antibody - N-terminal region

Rabbit Polyclonal Antibody

Catalog # AI10015

## Product Information

---

<b>Application</b>	WB
<b>Primary Accession</b>	<a href="#">P17542</a>
<b>Other Accession</b>	<a href="#">P17542</a> , <a href="#">NP_003180</a> , <a href="#">NM_003189</a>
<b>Reactivity</b>	Human, Mouse, Rat, Rabbit, Pig, Dog, Bovine
<b>Predicted</b>	Human, Mouse, Rat, Rabbit, Bovine
<b>Host</b>	Rabbit
<b>Clonality</b>	Polyclonal
<b>Calculated MW</b>	34271

## Additional Information

---

<b>Gene ID</b>	6886
<b>Alias Symbol</b>	SCL, TCL5, tal-1, bHLHa17
<b>Other Names</b>	T-cell acute lymphocytic leukemia protein 1, TAL-1, Class A basic helix-loop-helix protein 17, bHLHa17, Stem cell protein, T-cell leukemia/lymphoma protein 5, TAL1, BHLHA17, SCL, TCL5
<b>Target/Specificity</b>	TAL1 is implicated in the genesis of hemopoietic malignancies. It may play an important role in hemopoietic differentiation. It also serves as a positive regulator of erythroid differentiation
<b>Format</b>	Liquid. Purified antibody supplied in 1x PBS buffer with 0.09% (w/v) sodium azide and 2% sucrose.
<b>Reconstitution &amp; Storage</b>	Add 50 ul of distilled water. Final anti-TAL1 antibody concentration is 1 mg/ml in PBS buffer with 2% sucrose. For longer periods of storage, store at -20°C. Avoid repeat freeze-thaw cycles.
<b>Precautions</b>	TAL1 antibody - N-terminal region is for research use only and not for use in diagnostic or therapeutic procedures.

## Protein Information

---

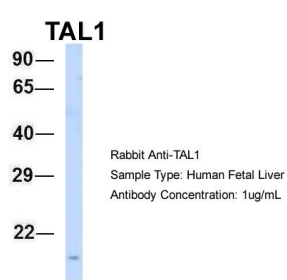
<b>Name</b>	TAL1
<b>Synonyms</b>	BHLHA17, SCL, TCL5
<b>Function</b>	Implicated in the genesis of hemopoietic malignancies. It may play an important role in hemopoietic differentiation. Serves as a positive regulator of erythroid differentiation (By similarity).

Cellular Location	Nucleus {ECO:0000255 PROSITE-ProRule:PRU00981}.
Tissue Location	Leukemic stem cell.

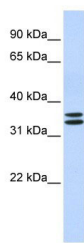
## Background

This is a rabbit polyclonal antibody against TAL1. It was validated on Western Blot using a cell lysate as a positive control. Abgent strives to provide antibodies covering each member of a whole protein family of your interest. We also use our best efforts to provide you antibodies recognize various epitopes of a target protein. For availability of antibody needed for your experiment, please inquire (sales@abgent.com).

## Images



TAL1 antibody - N-terminal region (AI10015) in Hum. Fetal Liver cells using Western Blot  
 Host:Rabbit  
 Target Name:TAL1  
 Sample Tissue:Human Fetal Liver  
 Antibody Dilution: 1.0 µg/ml



TAL1 antibody - N-terminal region (AI10015) in Human Brain cells using Western Blot  
 WB Suggested Anti-TAL1 Antibody Titration: 0.2-1 µg/ml  
 ELISA Titer: 1:62500  
 Positive Control: Human brain

Please note: All products are 'FOR RESEARCH USE ONLY. NOT FOR USE IN DIAGNOSTIC OR THERAPEUTIC PROCEDURES'.