

DLX2 antibody - N-terminal region

Rabbit Polyclonal Antibody

Catalog # AI10024

Product Information

Application	WB, IHC
Primary Accession	Q07687
Other Accession	Q07687 , NP_004396 , NM_004405
Reactivity	Human, Mouse, Dog, Guinea Pig, Horse, Bovine
Predicted	Human, Mouse, Bovine
Host	Rabbit
Clonality	Polyclonal
Calculated MW	34243

Additional Information

Gene ID	1746
Alias Symbol	TES1, TES-1
Other Names	Homeobox protein DLX-2, DLX2
Target/Specificity	Many vertebrate homeo box-containing genes have been identified on the basis of their sequence similarity with Drosophila developmental genes. Members of the Dlx gene family contain a homeobox that is related to that of Distal-less (Dll), a gene expressed in the head and limbs of the developing fruit fly. The Distal-less (Dlx) family of genes comprises at least 6 different members, DLX1-DLX6. The DLX proteins are postulated to play a role in forebrain and craniofacial development.
Format	Liquid. Purified antibody supplied in 1x PBS buffer with 0.09% (w/v) sodium azide and 2% sucrose.
Reconstitution & Storage	Add 100 ul of distilled water. Final anti-DLX2 antibody concentration is 1 mg/ml in PBS buffer with 2% sucrose. For longer periods of storage, store at -20°C. Avoid repeat freeze-thaw cycles.
Precautions	DLX2 antibody - N-terminal region is for research use only and not for use in diagnostic or therapeutic procedures.

Protein Information

Name	DLX2
Function	Acts as a transcriptional activator (By similarity). Activates transcription of CGA/alpha-GSU, via binding to the downstream activin regulatory element (DARE) in the gene promoter (By similarity). Plays a role in terminal

differentiation of interneurons, such as amacrine and bipolar cells in the developing retina. Likely to play a regulatory role in the development of the ventral forebrain (By similarity). May play a role in craniofacial patterning and morphogenesis (By similarity).

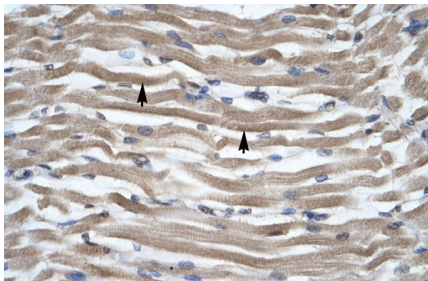
Cellular Location

Nucleus.

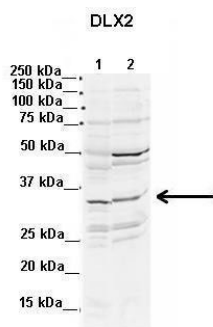
Background

This is a rabbit polyclonal antibody against DLX2. It was validated on Western Blot and immunohistochemistry by Abgent. At Abgent we manufacture rabbit polyclonal antibodies on a large scale (200-1000 products/month) of high throughput manner. Our antibodies are peptide based and protein family oriented. We usually provide antibodies covering each member of a whole protein family of your interest. We also use our best efforts to provide you antibodies recognize various epitopes of a target protein. For availability of antibody needed for your experiment, please inquire (sales@abgent.com).

Images

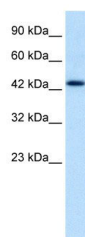


DLX2 antibody - N-terminal region (AI10024) in Human Muscle cells using Immunohistochemistry
HumanMuscle



See Immunoblot 2 Data and Customer Feedback for more information

DLX2 antibody - N-terminal region (AI10024) in Mouse, Rat cells using Western Blot
Lanes: 1. Mouse WT brain extract (80ug) 2. Rat brain extract (80ug)
Primary Antibody Dilution: 2 µg/ml
Secondary Antibody: IRDye 800CW goat anti-rabbit from Li-COR Bioscience
Secondary Antibody Dilution: 1: 20,000
Gene Name: DLX2



DLX2 antibody - N-terminal region (AI10024) in Human Jurkat cells using Western Blot
WB Suggested Anti-DLX2 Antibody Titration: 1.25 µg/ml
ELISA Titer: 1:1562500
Positive Control: Jurkat cell lysate

Please note: All products are 'FOR RESEARCH USE ONLY. NOT FOR USE IN DIAGNOSTIC OR THERAPEUTIC PROCEDURES'.