

# FOXE1 antibody - middle region

Rabbit Polyclonal Antibody

Catalog # AI10029

## Product Information

Application	WB
Primary Accession	<a href="#">O00358</a>
Other Accession	<a href="#">O00358</a> , <a href="#">NP_004464</a> , <a href="#">NM_004473</a>
Reactivity	Human, Mouse, Rat, Pig, Guinea Pig, Bovine
Predicted	Human, Mouse, Rat, Bovine
Host	Rabbit
Clonality	Polyclonal
Calculated MW	38076

## Additional Information

Gene ID	2304
Alias Symbol	FKHL15, FOXE2, HFKH4, HFKL5, TITF2, TTF-2, TTF2
Other Names	Forkhead box protein E1, Forkhead box protein E2, Forkhead-related protein FKHL15, HFKH4, HNF-3/fork head-like protein 5, HFKL5, Thyroid transcription factor 2, TTF-2, FOXE1, FKHL15, FOXE2, TITF2, TTF2
Target/Specificity	<p>FOXE1 belongs to the forkhead family of transcription factors, which is characterized by a distinct forkhead domain. It functions as a thyroid transcription factor which likely plays a crucial role in thyroid morphogenesis. Mutations in this gene are associated with congenital hypothyroidism and cleft palate with thyroid dysgenesis. The map localization of this gene suggests it may also be a candidate gene for squamous cell epithelioma and hereditary sensory neuropathy type I. This intronless gene belongs to the forkhead family of transcription factors, which is characterized by a distinct forkhead domain. This gene functions as a thyroid transcription factor which likely plays a crucial role in thyroid morphogenesis. Mutations in this gene are associated with congenital hypothyroidism and cleft palate with thyroid dysgenesis. The map localization of this gene suggests it may also be a candidate gene for squamous cell epithelioma and hereditary sensory neuropathy type I. Publication Note: This RefSeq record includes a subset of the publications that are available for this gene. Please see the Entrez Gene record to access additional publications.</p>
Format	Liquid. Purified antibody supplied in 1x PBS buffer with 0.09% (w/v) sodium azide and 2% sucrose.
Reconstitution & Storage	Add 50 ul of distilled water. Final anti-FOXE1 antibody concentration is 1 mg/ml in PBS buffer with 2% sucrose. For longer periods of storage, store at -20°C. Avoid repeat freeze-thaw cycles.
Precautions	FOXE1 antibody - middle region is for research use only and not for use in

diagnostic or therapeutic procedures.

## Protein Information

---

<b>Name</b>	FOXE1
<b>Synonyms</b>	FKHL15, FOXE2, TITF2, TTF2
<b>Function</b>	Transcription factor that binds consensus sites on a variety of gene promoters and activate their transcription. Involved in proper palate formation, most probably through the expression of MSX1 and TGFB3 genes which are direct targets of this transcription factor. Also implicated in thyroid gland morphogenesis. May indirectly play a role in cell growth and migration through the regulation of WNT5A expression.
<b>Cellular Location</b>	Nucleus.
<b>Tissue Location</b>	Detected in adult brain, placenta, lung, liver, skeletal muscle, kidney, pancreas, heart, colon, small intestine testis and thymus. Expression was strongest in heart and pancreas

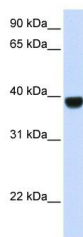
## Background

---

This is a rabbit polyclonal antibody against FOXE1. It was validated on Western Blot using a cell lysate as a positive control. Abgent strives to provide antibodies covering each member of a whole protein family of your interest. We also use our best efforts to provide you antibodies recognize various epitopes of a target protein. For availability of antibody needed for your experiment, please inquire ([sales@abgent.com](mailto:sales@abgent.com)).

## Images

---



FOXE1 antibody - middle region (AI10029) in Human Muscle cells using Western Blot  
WB Suggested Anti-FOXE1 Antibody Titration: 0.2-1 µg/ml  
ELISA Titer: 1:62500  
Positive Control: Human Muscle

Please note: All products are 'FOR RESEARCH USE ONLY. NOT FOR USE IN DIAGNOSTIC OR THERAPEUTIC PROCEDURES'.