

# SSBP2 antibody - N-terminal region

Rabbit Polyclonal Antibody

Catalog # AI10031

## Product Information

---

<b>Application</b>	WB, IHC
<b>Primary Accession</b>	<a href="#">P81877</a>
<b>Other Accession</b>	<a href="#">P81877</a> , <a href="#">NP_036578</a> , <a href="#">NM_012446</a>
<b>Reactivity</b>	Human, Mouse, Rat, Rabbit, Zebrafish, Pig, Dog, Guinea Pig, Horse, Bovine
<b>Predicted</b>	Human, Mouse, Rat, Pig, Chicken, Dog, Guinea Pig, Horse, Bovine
<b>Host</b>	Rabbit
<b>Clonality</b>	Polyclonal
<b>Calculated MW</b>	37828

## Additional Information

---

<b>Gene ID</b>	23635
<b>Alias Symbol</b> <b>Other Names</b>	DKFZp686F03273, HSPC116, SOSS-B2 Single-stranded DNA-binding protein 2, Sequence-specific single-stranded-DNA-binding protein 2, SSBP2, SSDP2
<b>Target/Specificity</b>	SSBP2 is a member of a closely related, evolutionarily conserved, and ubiquitously expressed gene family. It is also a potential tumor suppressor.
<b>Format</b>	Liquid. Purified antibody supplied in 1x PBS buffer with 0.09% (w/v) sodium azide and 2% sucrose.
<b>Reconstitution &amp; Storage</b>	Add 50 ul of distilled water. Final anti-SSBP2 antibody concentration is 1 mg/ml in PBS buffer with 2% sucrose. For longer periods of storage, store at -20°C. Avoid repeat freeze-thaw cycles.
<b>Precautions</b>	SSBP2 antibody - N-terminal region is for research use only and not for use in diagnostic or therapeutic procedures.

## Protein Information

---

<b>Name</b>	SSBP2
<b>Synonyms</b>	SSDP2
<b>Cellular Location</b>	Nucleus.
<b>Tissue Location</b>	Ubiquitous..

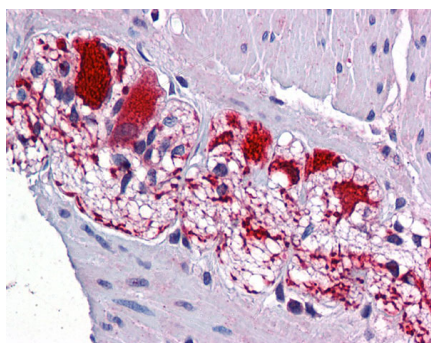
## Background

---

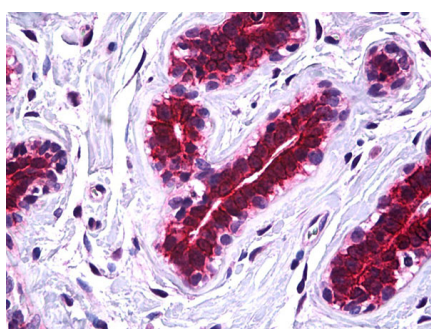
This is a rabbit polyclonal antibody against SSBP2. It was validated on Western Blot and immunohistochemistry by Abgent. At Abgent we manufacture rabbit polyclonal antibodies on a large scale (200-1000 products/month) of high throughput manner. Our antibodies are peptide based and protein family oriented. We usually provide antibodies covering each member of a whole protein family of your interest. We also use our best efforts to provide you antibodies recognize various epitopes of a target protein. For availability of antibody needed for your experiment, please inquire (sales@abgent.com).

## Images

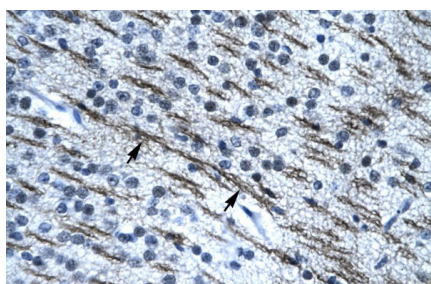
---



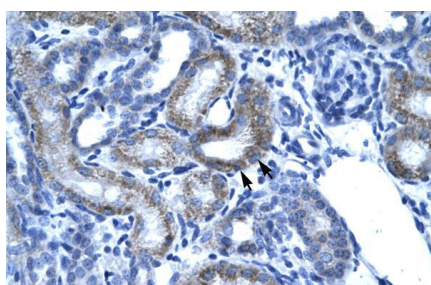
SSBP2 antibody - N-terminal region (AI10031) in Colon, myenteric plexus cells using Immunohistochemistry  
Colon, myenteric plexus



SSBP2 antibody - N-terminal region (AI10031) in breast cells using Immunohistochemistry  
IHC Information: Paraffin embedded breast tissue, tested with an antibody dilution of 5 µg/ml.

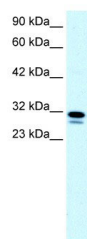


SSBP2 antibody - N-terminal region (AI10031) in Human Brain cells using Immunohistochemistry  
Rabbit Anti-SSBP2 Antibody  
Paraffin Embedded Tissue: Human Brain  
Cellular Data: Nerve fibre  
Antibody Concentration: 4.0-8.0 µg/ml  
Magnification: 400X



SSBP2 antibody - N-terminal region (AI10031) in Human kidney cells using Immunohistochemistry  
Rabbit Anti-SSBP2 Antibody  
Paraffin Embedded Tissue: Human Kidney  
Cellular Data: Epithelial cells of renal tubule  
Antibody Concentration: 4.0-8.0 µg/ml  
Magnification: 400X

SSBP2 antibody - N-terminal region (AI10031) in Human Raji cells using Western Blot  
WB Suggested Anti-SSBP2 Antibody Titration: 0.2-1 µg/ml  
ELISA Titer: 1:7812500  
Positive Control: Raji cell lysate



Please note: All products are 'FOR RESEARCH USE ONLY. NOT FOR USE IN DIAGNOSTIC OR THERAPEUTIC PROCEDURES'.