

# GFI1 antibody - N-terminal region

Rabbit Polyclonal Antibody

Catalog # AI10032

## Product Information

---

Application	WB
Primary Accession	<a href="#">Q99684</a>
Other Accession	<a href="#">Q99684</a> , <a href="#">NP_005254</a> , <a href="#">NM_005263</a>
Reactivity	Human, Mouse, Rat, Rabbit, Pig, Dog, Guinea Pig, Horse, Bovine
Predicted	Human, Mouse, Rat, Rabbit, Pig, Dog, Guinea Pig, Horse, Bovine
Host	Rabbit
Clonality	Polyclonal
Calculated MW	45297

## Additional Information

---

Gene ID	2672
Alias Symbol	ZNF163, SCN2, GFI-1
Other Names	Zinc finger protein Gfi-1, Growth factor independent protein 1, Zinc finger protein 163, GFI1, ZNF163
Target/Specificity	GFI1 may be a transcription factor involved in regulating the expression of genes active in the S phase during cell cycle progression in T-cells. GFI1 may be involved in tumor progression. Defects in GFI1 are a cause of autosomal dominant severe congenital neutropenia (SCN) and dominant nonimmune chronic idiopathic neutropenia of adults (NI-CINA)
Format	Liquid. Purified antibody supplied in 1x PBS buffer with 0.09% (w/v) sodium azide and 2% sucrose.
Reconstitution & Storage	Add 50 ul of distilled water. Final anti-GFI1 antibody concentration is 1 mg/ml in PBS buffer with 2% sucrose. For longer periods of storage, store at -20°C. Avoid repeat freeze-thaw cycles.
Precautions	GFI1 antibody - N-terminal region is for research use only and not for use in diagnostic or therapeutic procedures.

## Protein Information

---

Name	GFI1
Synonyms	ZNF163
Function	Transcription repressor essential for hematopoiesis (PubMed: <a href="#">11060035</a> , PubMed: <a href="#">17197705</a> , PubMed: <a href="#">17646546</a> , PubMed: <a href="#">18805794</a> ,

PubMed:[19164764](#), PubMed:[20190815](#), PubMed:[8754800](#)). Functions in a cell-context and development-specific manner (PubMed:[11060035](#), PubMed:[17197705](#), PubMed:[17646546](#), PubMed:[18805794](#), PubMed:[19164764](#), PubMed:[20190815](#), PubMed:[8754800](#)). Binds to 5'-TAAATCAC[AT]GCA-3' in the promoter region of a large number of genes (PubMed:[11060035](#), PubMed:[17197705](#), PubMed:[17646546](#), PubMed:[18805794](#), PubMed:[19164764](#), PubMed:[20190815](#), PubMed:[8754800](#)). Component of several complexes, including the EHMT2-GFI1-HDAC1, AJUBA-GFI1-HDAC1 and RCOR-GFI-KDM1A- HDAC complexes, that suppress, via histone deacetylase (HDAC) recruitment, a number of genes implicated in multilineage blood cell development (PubMed:[16287849](#)). Regulates neutrophil differentiation, promotes proliferation of lymphoid cells, and is required for granulocyte development (PubMed:[12778173](#)). Inhibits SPI1 transcriptional activity at macrophage-specific genes, repressing macrophage differentiation of myeloid progenitor cells and promoting granulocyte commitment (By similarity). Mediates, together with U2AF1L4, the alternative splicing of CD45 and controls T-cell receptor signaling (By similarity). Regulates the endotoxin-mediated Toll-like receptor (TLR) inflammatory response by antagonizing RELA (PubMed:[20547752](#)). Cooperates with CBFA2T2 to regulate ITGB1-dependent neurite growth (PubMed:[19026687](#)). Controls cell-cycle progression by repressing CDKNIA/p21 transcription in response to TGFβ1 via recruitment of GFI1 by ZBTB17 to the CDKNIA/p21 and CDKNIB promoters (PubMed:[16287849](#)). Required for the maintenance of inner ear hair cells (By similarity). In addition to its role in transcription, acts as a substrate adapter for PRMT1 in the DNA damage response: facilitates the recognition of TP53BP1 and MRE11 substrates by PRMT1, promoting their methylation and the DNA damage response (PubMed:[29651020](#)).

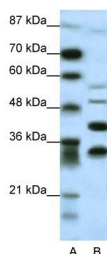
## Cellular Location

Nucleus Note=Colocalizes with PIAS3 and RUNX1T1 in nuclear dots

## Background

This is a rabbit polyclonal antibody against GFI1. It was validated on Western Blot using a cell lysate as a positive control. Abgent strives to provide antibodies covering each member of a whole protein family of your interest. We also use our best efforts to provide you antibodies recognize various epitopes of a target protein. For availability of antibody needed for your experiment, please inquire ([sales@abgent.com](mailto:sales@abgent.com)).

## Images



GFI1 antibody - N-terminal region (AI10032) in Human HepG2 cells using Western Blot  
WB Suggested Anti-GFI1 Antibody Titration: 0.2-1 µg/ml  
ELISA Titer: 1:312500  
Positive Control: HepG2 cell lysate

Please note: All products are 'FOR RESEARCH USE ONLY. NOT FOR USE IN DIAGNOSTIC OR THERAPEUTIC PROCEDURES'.