

# GTF3C2 antibody - middle region

Rabbit Polyclonal Antibody

Catalog # AI10034

## Product Information

---

|                          |  |
|--------------------------|--|
| <b>Application</b>       | WB   |
| <b>Primary Accession</b> | <a href="#">Q8WUA4</a>   |
| <b>Other Accession</b>   | <a href="#">Q8WUA4</a> , <a href="#">NP_001512</a> , <a href="#">NM_001521</a> |
| <b>Reactivity</b>        | Human, Mouse, Rat, Rabbit, Dog, Guinea Pig, Horse, Bovine                      |
| <b>Predicted</b>         | Human, Rabbit, Dog, Guinea Pig, Horse, Bovine                                  |
| <b>Host</b>              | Rabbit   |
| <b>Clonality</b>         | Polyclonal   |
| <b>Calculated MW</b>     | 100680   |

## Additional Information

---

|                                     |   |
|-------------------------------------|---|
| <b>Gene ID</b>                      | 2976  |
| <b>Alias Symbol</b>                 | KIAA0011, TFIIC-BETA, TFIIC110  |
| <b>Other Names</b>                  | General transcription factor 3C polypeptide 2, TF3C-beta, Transcription factor IIC 110 kDa subunit, TFIIC 110 kDa subunit, TFIIC110, Transcription factor IIC subunit beta, GTF3C2, KIAA0011  |
| <b>Target/Specificity</b>           | GTF3C2 is required for RNA polymerase III-mediated transcription. GTF3C2 is a component of TFIIC that initiates transcription complex assembly on tRNA and is required for transcription of 5S rRNA and other stable nuclear and cytoplasmic RNAs. GTF3C2 may play a direct role in stabilizing interactions of TFIIC2 with TFIIC1. |
| <b>Format</b>                       | Liquid. Purified antibody supplied in 1x PBS buffer with 0.09% (w/v) sodium azide and 2% sucrose.   |
| <b>Reconstitution &amp; Storage</b> | Add 50 ul of distilled water. Final anti-GTF3C2 antibody concentration is 1 mg/ml in PBS buffer with 2% sucrose. For longer periods of storage, store at -20°C. Avoid repeat freeze-thaw cycles.  |
| <b>Precautions</b>                  | GTF3C2 antibody - middle region is for research use only and not for use in diagnostic or therapeutic procedures.   |

## Protein Information

---

|                 |  |
|-----------------|--|
| <b>Name</b>     | GTF3C2   |
| <b>Synonyms</b> | KIAA0011   |
| <b>Function</b> | Required for RNA polymerase III-mediated transcription. Component of |

TFIIIC that initiates transcription complex assembly on tRNA and is required for transcription of 5S rRNA and other stable nuclear and cytoplasmic RNAs. May play a direct role in stabilizing interactions of TFIIIC2 with TFIIIC1.

#### Cellular Location

Nucleus.

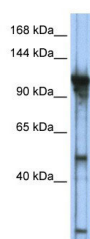
## Background

---

This is a rabbit polyclonal antibody against GTF3C2. It was validated on Western Blot using a cell lysate as a positive control. Abgent strives to provide antibodies covering each member of a whole protein family of your interest. We also use our best efforts to provide you antibodies recognize various epitopes of a target protein. For availability of antibody needed for your experiment, please inquire ([sales@abgent.com](mailto:sales@abgent.com)).

## Images

---



GTF3C2 antibody - middle region (AI10034) in r-GTF3C2 cells using Western Blot

WB Suggested Anti-GTF3C2 Antibody Titration: 0.2-1  $\mu$ g/ml

ELISA Titer: 1:12500

Positive Control: Transfected 293T

Please note: All products are 'FOR RESEARCH USE ONLY. NOT FOR USE IN DIAGNOSTIC OR THERAPEUTIC PROCEDURES'.