

GRHL1 antibody - N-terminal region

Rabbit Polyclonal Antibody

Catalog # AI10035

Product Information

Application	WB
Primary Accession	Q9NZI5
Other Accession	Q9NZI5 , NP_055367 , NM_014552
Reactivity	Human, Mouse, Rat, Pig, Dog, Horse, Bovine
Predicted	Human, Mouse, Rat, Dog, Horse, Bovine
Host	Rabbit
Clonality	Polyclonal
Calculated MW	70113

Additional Information

Gene ID	29841
Alias Symbol	LBP-32, LBP32, MGR, TFCP2L2, NH32
Other Names	Grainyhead-like protein 1 homolog, Mammalian grainyhead, NH32, Transcription factor CP2-like 2, Transcription factor LBP-32, GRHL1, LBP32, MGR, TFCP2L2
Target/Specificity	GRHL1 is a member of the grainyhead family of transcription factors. GRHL1 interacts with sister of mammalian grainyhead (SOM) and may function as a transcription factor during development. Two transcript variants encoding distinct isoforms have been identified for GRHL1. This gene encodes a member of the grainyhead family of transcription factors. The encoded protein interacts with sister of mammalian grainyhead (SOM) and may function as a transcription factor during development. Two transcript variants encoding distinct isoforms have been identified for this gene.
Format	Liquid. Purified antibody supplied in 1x PBS buffer with 0.09% (w/v) sodium azide and 2% sucrose.
Reconstitution & Storage	Add 50 ul of distilled water. Final anti-GRHL1 antibody concentration is 1 mg/ml in PBS buffer with 2% sucrose. For longer periods of storage, store at -20°C. Avoid repeat freeze-thaw cycles.
Precautions	GRHL1 antibody - N-terminal region is for research use only and not for use in diagnostic or therapeutic procedures.

Protein Information

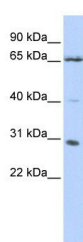
Name	GRHL1 (HGNC:17923)
-------------	--------------------------------------

Function	Transcription factor involved in epithelial development. Binds directly to the consensus DNA sequence 5'-AACCGGTT-3' (PubMed: 12175488 , PubMed: 18288204 , PubMed: 29309642). Important regulator of DSG1 in the context of hair anchorage and epidermal differentiation, participates in the maintenance of the skin barrier. There is no genetic interaction with GRHL3, nor functional cooperativity due to diverse target gene selectivity during epithelia development (By similarity). May play a role in regulating glucose homeostasis and insulin signaling.
Cellular Location	Nucleus
Tissue Location	Isoform 1 is highly expressed in brain, pancreas, tonsil, placenta and kidney. Isoform 2 is highly expressed in brain and liver. Expressed at very low levels in non-steroidogenic cells

Background

This is a rabbit polyclonal antibody against GRHL1. It was validated on Western Blot using a cell lysate as a positive control. Abgent strives to provide antibodies covering each member of a whole protein family of your interest. We also use our best efforts to provide you antibodies recognize various epitopes of a target protein. For availability of antibody needed for your experiment, please inquire (sales@abgent.com).

Images



GRHL1 antibody - N-terminal region (AI10035) in Human Jurkat cells using Western Blot
 WB Suggested Anti-GRHL1 Antibody Titration: 0.2-1 µg/ml
 ELISA Titer: 1:62500
 Positive Control: Jurkat cell lysate

Please note: All products are 'FOR RESEARCH USE ONLY. NOT FOR USE IN DIAGNOSTIC OR THERAPEUTIC PROCEDURES'.