

# NPAS1 antibody - C-terminal region

Rabbit Polyclonal Antibody

Catalog # AI10040

## Product Information

---

<b>Application</b>	WB, IHC
<b>Primary Accession</b>	<a href="#">Q99742</a>
<b>Other Accession</b>	<a href="#">Q99742</a> , <a href="#">NP_002508</a> , <a href="#">NM_002517</a>
<b>Reactivity</b>	Human, Mouse, Rat, Rabbit, Pig, Dog
<b>Predicted</b>	Human, Mouse, Rat, Rabbit, Pig
<b>Host</b>	Rabbit
<b>Clonality</b>	Polyclonal
<b>Calculated MW</b>	62702

## Additional Information

---

<b>Gene ID</b>	4861
<b>Alias Symbol</b> <b>Other Names</b>	MOP5, PASD5, bHLHe11 Neuronal PAS domain-containing protein 1, Neuronal PAS1, Basic-helix-loop-helix-PAS protein MOP5, Class E basic helix-loop-helix protein 11, bHLHe11, Member of PAS protein 5, PAS domain-containing protein 5, NPAS1, BHLHE11, MOP5, PASD5
<b>Target/Specificity</b>	NPAS1 is a member of the basic helix-loop-helix (bHLH)-PAS family of transcription factors. Studies of a related mouse gene suggest that it functions in neurons. The exact function of this gene is unclear, but it may play protective or modulatory roles during late embryogenesis and postnatal development.
<b>Format</b>	Liquid. Purified antibody supplied in 1x PBS buffer with 0.09% (w/v) sodium azide and 2% sucrose.
<b>Reconstitution &amp; Storage</b>	Add 50 ul of distilled water. Final anti-NPAS1 antibody concentration is 1 mg/ml in PBS buffer with 2% sucrose. For longer periods of storage, store at -20°C. Avoid repeat freeze-thaw cycles.
<b>Precautions</b>	NPAS1 antibody - C-terminal region is for research use only and not for use in diagnostic or therapeutic procedures.

## Protein Information

---

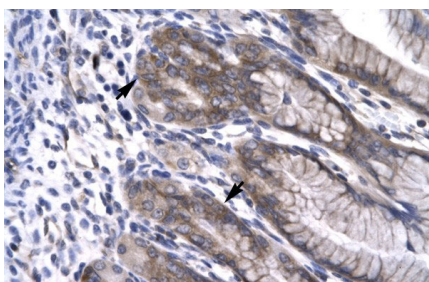
<b>Name</b>	NPAS1
<b>Synonyms</b>	BHLHE11, MOP5, PASD5

<b>Function</b>	May control regulatory pathways relevant to schizophrenia and to psychotic illness. May play a role in late central nervous system development by modulating EPO expression in response to cellular oxygen level (By similarity). Forms a heterodimer that binds core DNA sequence 5'-TACGTG-3' within the hypoxia response element (HRE) leading to transcriptional repression on its target gene TH (By similarity).
<b>Cellular Location</b>	Nucleus {ECO:0000255 PROSITE-ProRule:PRU00981}.

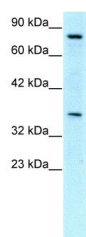
## Background

This is a rabbit polyclonal antibody against NPAS1. It was validated on Western Blot and immunohistochemistry by Abgent. At Abgent we manufacture rabbit polyclonal antibodies on a large scale (200-1000 products/month) of high throughput manner. Our antibodies are peptide based and protein family oriented. We usually provide antibodies covering each member of a whole protein family of your interest. We also use our best efforts to provide you antibodies recognize various epitopes of a target protein. For availability of antibody needed for your experiment, please inquire (sales@abgent.com).

## Images



NPAS1 antibody - C-terminal region (AI10040) in Human Stomach cells using Immunohistochemistry  
Human Stomach



NPAS1 antibody - C-terminal region (AI10040) in Human Jurkat cells using Western Blot  
WB Suggested Anti-NPAS1 Antibody Titration: 0.2-1 µg/ml  
Positive Control: Jurkat cell lysate  
NPAS1 is supported by BioGPS gene expression data to be expressed in Jurkat

Please note: All products are 'FOR RESEARCH USE ONLY. NOT FOR USE IN DIAGNOSTIC OR THERAPEUTIC PROCEDURES'.