

# ZNF691 antibody - N-terminal region

Rabbit Polyclonal Antibody

Catalog # AI10042

## Product Information

---

<b>Application</b>	WB
<b>Primary Accession</b>	<a href="#">Q5VV52</a>
<b>Other Accession</b>	<a href="#">Q5VV52-2</a> , <a href="#">NP_056995</a> , <a href="#">NM_015911</a>
<b>Reactivity</b>	Human, Mouse, Rat, Rabbit, Pig, Dog, Horse, Bovine
<b>Predicted</b>	Human
<b>Host</b>	Rabbit
<b>Clonality</b>	Polyclonal
<b>Calculated MW</b>	35810

## Additional Information

---

<b>Gene ID</b>	51058
<b>Alias Symbol</b>	Zfp691, RP11-342M1.5
<b>Other Names</b>	Zinc finger protein 691, ZNF691
<b>Target/Specificity</b>	ZNF691 may be involved in transcriptional regulation
<b>Format</b>	Liquid. Purified antibody supplied in 1x PBS buffer with 0.09% (w/v) sodium azide and 2% sucrose.
<b>Reconstitution &amp; Storage</b>	Add 100 ul of distilled water. Final anti-ZNF691 antibody concentration is 1 mg/ml in PBS buffer with 2% sucrose. For longer periods of storage, store at -20°C. Avoid repeat freeze-thaw cycles.
<b>Precautions</b>	ZNF691 antibody - N-terminal region is for research use only and not for use in diagnostic or therapeutic procedures.

## Protein Information

---

<b>Name</b>	ZNF691
<b>Function</b>	May be involved in transcriptional regulation.
<b>Cellular Location</b>	Nucleus.

## Background

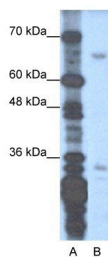
---

This is a rabbit polyclonal antibody against ZNF691. It was validated on Western Blot using a cell lysate as a positive control. Abgent strives to provide antibodies covering each member of a whole protein family of

your interest. We also use our best efforts to provide you antibodies recognize various epitopes of a target protein. For availability of antibody needed for your experiment, please inquire ([sales@abgent.com](mailto:sales@abgent.com)).

## Images

---



ZNF691 antibody - N-terminal region (AI10042) in  
Transfected 293T cells using Western Blot  
WB Suggested Anti-ZNF691 Antibody Titration: 1.25 µg/ml  
Positive Control: Transfected 293T

Please note: All products are 'FOR RESEARCH USE ONLY. NOT FOR USE IN DIAGNOSTIC OR THERAPEUTIC PROCEDURES'.