

PITX1 antibody - N-terminal region

Rabbit Polyclonal Antibody

Catalog # AI10047

Product Information

Application	WB
Primary Accession	P78337
Other Accession	P78337 , NP_002644 , NM_002653
Reactivity	Human, Mouse, Rat, Pig, Dog, Guinea Pig, Bovine
Predicted	Human, Mouse, Rat, Pig, Chicken, Dog, Guinea Pig, Bovine
Host	Rabbit
Clonality	Polyclonal
Calculated MW	34128

Additional Information

Gene ID	5307
Alias Symbol	BFT, POTX, PTX1, CCF
Other Names	Pituitary homeobox 1, Hindlimb-expressed homeobox protein backfoot, Homeobox protein PITX1, Paired-like homeodomain transcription factor 1, PITX1, BFT, PTX1
Target/Specificity	PITX1 is a member of the RIEG/PITX homeobox family, which is involved in organ development and left-right asymmetry. This protein acts as a transcriptional regulator involved in basal and hormone-regulated activity of prolactin. This gene encodes a member of the RIEG/PITX homeobox family, which is in the bicoid class of homeodomain proteins. Members of this family are involved in organ development and left-right asymmetry. This protein acts as a transcriptional regulator involved in basal and hormone-regulated activity of prolactin. Publication Note: This RefSeq record includes a subset of the publications that are available for this gene. Please see the Entrez Gene record to access additional publications.
Format	Liquid. Purified antibody supplied in 1x PBS buffer with 0.09% (w/v) sodium azide and 2% sucrose.
Reconstitution & Storage	Add 50 ul of distilled water. Final anti-PITX1 antibody concentration is 1 mg/ml in PBS buffer with 2% sucrose. For longer periods of storage, store at -20°C. Avoid repeat freeze-thaw cycles.
Precautions	PITX1 antibody - N-terminal region is for research use only and not for use in diagnostic or therapeutic procedures.

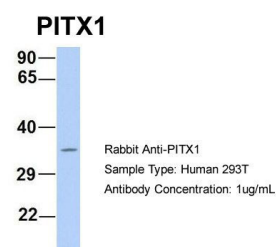
Protein Information

Name	PITX1
Synonyms	BFT, PTX1
Function	Sequence-specific transcription factor that binds gene promoters and activates their transcription. May play a role in the development of anterior structures, and in particular, the brain and facies and in specifying the identity or structure of hindlimb.
Cellular Location	Nucleus.

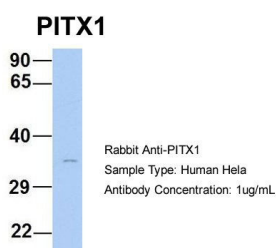
Background

This is a rabbit polyclonal antibody against PITX1. It was validated on Western Blot using a cell lysate as a positive control. Abgent strives to provide antibodies covering each member of a whole protein family of your interest. We also use our best efforts to provide you antibodies recognize various epitopes of a target protein. For availability of antibody needed for your experiment, please inquire (sales@abgent.com).

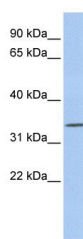
Images



PITX1 antibody - N-terminal region (AI10047) in Human 293T cells using Western Blot
Host:Rabbit
Target Name:PITX1
Sample Tissue:Human 293T
Antibody Dilution: 1.0 µg/ml
PITX1 is supported by BioGPS gene expression data to be expressed in HEK293T



PITX1 antibody - N-terminal region (AI10047) in Human HeLa cells using Western Blot
Host:Rabbit
Target Name:PITX1
Sample Tissue:Human HeLa
Antibody Dilution: 1.0 µg/ml
PITX1 is strongly supported by BioGPS gene expression data to be expressed in Human HeLa cells



PITX1 antibody - N-terminal region (AI10047) in Human MCF-7 cells using Western Blot
WB Suggested Anti-PITX1 Antibody Titration: 0.2-1 µg/ml
ELISA Titer: 1:62500
Positive Control: MCF7 cell lysate

Please note: All products are 'FOR RESEARCH USE ONLY. NOT FOR USE IN DIAGNOSTIC OR THERAPEUTIC PROCEDURES'.