

LHX1 antibody - N-terminal region

Rabbit Polyclonal Antibody

Catalog # AI10054

Product Information

Application	WB
Primary Accession	P48742
Other Accession	P48742 , NP_005559 , NM_005568
Reactivity	Human, Mouse, Rat, Rabbit, Pig, Dog, Guinea Pig, Horse, Bovine
Predicted	Human, Mouse, Rat, Chicken, Bovine
Host	Rabbit
Clonality	Polyclonal
Calculated MW	44808

Additional Information

Gene ID	3975
Alias Symbol	LIM1, LIM-1
Other Names	LIM/homeobox protein Lhx1, LIM homeobox protein 1, Homeobox protein Lim-1, hLim-1, LHX1, LIM-1, LIM1
Target/Specificity	LHX1 is a member of a large protein family which contains the LIM domain, a unique cysteine-rich zinc-binding domain. It may function as a transcriptional regulator and be involved in control of differentiation and development of neural and lymphoid cells.
Format	Liquid. Purified antibody supplied in 1x PBS buffer with 0.09% (w/v) sodium azide and 2% sucrose.
Reconstitution & Storage	Add 50 ul of distilled water. Final anti-LHX1 antibody concentration is 1 mg/ml in PBS buffer with 2% sucrose. For longer periods of storage, store at -20°C. Avoid repeat freeze-thaw cycles.
Precautions	LHX1 antibody - N-terminal region is for research use only and not for use in diagnostic or therapeutic procedures.

Protein Information

Name	LHX1
Synonyms	LIM-1, LIM1
Function	Potential transcription factor. May play a role in early mesoderm formation and later in lateral mesoderm differentiation and neurogenesis.

Cellular Location

Nucleus.

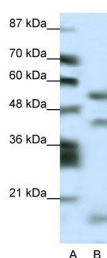
Tissue Location

Expressed in the brain, thymus, and tonsils. Expressed in samples from patients with chronic myeloid leukemia (CML) and in 58% of acute myeloid leukemia (AML) cell lines

Background

This is a rabbit polyclonal antibody against LHX1. It was validated on Western Blot using a cell lysate as a positive control. Abgent strives to provide antibodies covering each member of a whole protein family of your interest. We also use our best efforts to provide you antibodies recognize various epitopes of a target protein. For availability of antibody needed for your experiment, please inquire (sales@abgent.com).

Images



LHX1 antibody - N-terminal region (AI10054) in Human HepG2 cells using Western Blot
WB Suggested Anti-LHX1 Antibody Titration: 0.2-1 µg/ml
Positive Control: HepG2 cell lysate

Please note: All products are 'FOR RESEARCH USE ONLY. NOT FOR USE IN DIAGNOSTIC OR THERAPEUTIC PROCEDURES'.