

PSMD6 antibody - N-terminal region

Rabbit Polyclonal Antibody

Catalog # AI10057

Product Information

Application	WB
Primary Accession	Q15008
Other Accession	Q15008 , NP_055629 , NM_014814
Reactivity	Human, Mouse, Rat, Rabbit, Zebrafish, Pig, Dog, Guinea Pig, Horse, Bovine
Predicted	Human, Mouse, Rat, Rabbit, Zebrafish, Pig, Chicken, Dog, Horse, Bovine
Host	Rabbit
Clonality	Polyclonal
Calculated MW	45531

Additional Information

Gene ID	9861
Alias Symbol Other Names	KIAA0107, S10, SGA-113M, p44S10, Rpn7 26S proteasome non-ATPase regulatory subunit 6, 26S proteasome regulatory subunit RPN7, 26S proteasome regulatory subunit S10, Breast cancer-associated protein SGA-113M, Phosphonoformate immuno-associated protein 4, Proteasome regulatory particle subunit p44S10, p42A, PSMD6, KIAA0107, PFAAP4
Target/Specificity	PSMD6 acts as a regulatory subunit of the 26S proteasome which is involved in the ATP-dependent degradation of ubiquitinated proteins.
Format	Liquid. Purified antibody supplied in 1x PBS buffer with 0.09% (w/v) sodium azide and 2% sucrose.
Reconstitution & Storage	Add 100 ul of distilled water. Final anti-PSMD6 antibody concentration is 1 mg/ml in PBS buffer with 2% sucrose. For longer periods of storage, store at -20°C. Avoid repeat freeze-thaw cycles.
Precautions	PSMD6 antibody - N-terminal region is for research use only and not for use in diagnostic or therapeutic procedures.

Protein Information

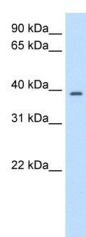
Name	PSMD6
Synonyms	KIAA0107, PFAAP4
Function	Component of the 26S proteasome, a multiprotein complex involved in the ATP-dependent degradation of ubiquitinated proteins. This complex plays a

key role in the maintenance of protein homeostasis by removing misfolded or damaged proteins, which could impair cellular functions, and by removing proteins whose functions are no longer required. Therefore, the proteasome participates in numerous cellular processes, including cell cycle progression, apoptosis, or DNA damage repair.

Background

This is a rabbit polyclonal antibody against PSMD6. It was validated on Western Blot using a cell lysate as a positive control. Abgent strives to provide antibodies covering each member of a whole protein family of your interest. We also use our best efforts to provide you antibodies recognize various epitopes of a target protein. For availability of antibody needed for your experiment, please inquire (sales@abgent.com).

Images



PSMD6 antibody - N-terminal region (AI10057) in
Transfected 293T cells using Western Blot
WB Suggested Anti-PSMD6 Antibody Titration: 2.5 µg/ml
Positive Control: Transfected 293T

Please note: All products are 'FOR RESEARCH USE ONLY. NOT FOR USE IN DIAGNOSTIC OR THERAPEUTIC PROCEDURES'.