

# LBX1 antibody - middle region

Rabbit Polyclonal Antibody

Catalog # AI10071

## Product Information

---

<b>Application</b>	WB
<b>Primary Accession</b>	<a href="#">P52954</a>
<b>Other Accession</b>	<a href="#">P52954</a> , <a href="#">NP_006553</a> , <a href="#">NM_006562</a>
<b>Reactivity</b>	Human, Mouse, Rat, Rabbit, Zebrafish, Pig, Dog, Guinea Pig, Horse, Bovine
<b>Predicted</b>	Human, Mouse, Rat, Rabbit, Zebrafish, Pig, Chicken, Dog, Guinea Pig, Bovine
<b>Host</b>	Rabbit
<b>Clonality</b>	Polyclonal
<b>Calculated MW</b>	30221

## Additional Information

---

<b>Gene ID</b>	10660
<b>Alias Symbol</b>	HPX-6, HPX6, LBX1H, homeobox
<b>Other Names</b>	Transcription factor LBX1, Ladybird homeobox protein homolog 1, LBX1, LBX1H
<b>Target/Specificity</b>	LBX1 is the transcription factor required for the development of GABAergic interneurons in the dorsal horn of the spinal cord and migration and further development of hypaxial muscle precursor cells for limb muscles, diaphragm and hypoglossal cord. This gene and the orthologous mouse gene were found by their homology to the Drosophila lady bird early and late homeobox genes. In the mouse, this gene is a key regulator of muscle precursor cell migration and is required for the acquisition of dorsal identities of forelimb muscles.
<b>Format</b>	Liquid. Purified antibody supplied in 1x PBS buffer with 0.09% (w/v) sodium azide and 2% sucrose.
<b>Reconstitution &amp; Storage</b>	Add 50 ul of distilled water. Final anti-LBX1 antibody concentration is 1 mg/ml in PBS buffer with 2% sucrose. For longer periods of storage, store at -20°C. Avoid repeat freeze-thaw cycles.
<b>Precautions</b>	LBX1 antibody - middle region is for research use only and not for use in diagnostic or therapeutic procedures.

## Protein Information

---

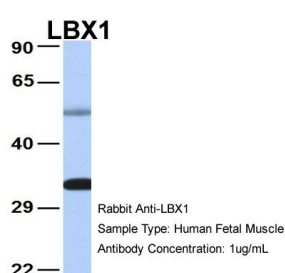
<b>Name</b>	LBX1
<b>Synonyms</b>	LBX1H

<b>Function</b>	Transcription factor required for the development of GABAergic interneurons in the dorsal horn of the spinal cord and migration and further development of hypaxial muscle precursor cells for limb muscles, diaphragm and hypoglossal cord.
<b>Cellular Location</b>	Nucleus.

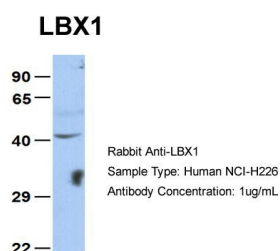
## Background

This is a rabbit polyclonal antibody against LBX1. It was validated on Western Blot using a cell lysate as a positive control. Abgent strives to provide antibodies covering each member of a whole protein family of your interest. We also use our best efforts to provide you antibodies recognize various epitopes of a target protein. For availability of antibody needed for your experiment, please inquire (sales@abgent.com).

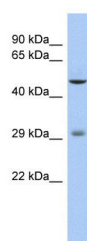
## Images



LBX1 antibody - middle region (AI10071) in Hum. Fetal Muscle cells using Western Blot  
Host: Rabbit  
Target Name: LBX1  
Sample Tissue: Human Fetal Muscle  
Antibody Dilution: 1.0 µg/ml



LBX1 antibody - middle region (AI10071) in Human NCI-H226 cells using Western Blot  
Host: Rabbit  
Target Name: LBX1  
Sample Tissue: NCI-H226  
Antibody Dilution: 1.0 µg/ml  
LBX1 is supported by BioGPS gene expression data to be expressed in NCIH226



LBX1 antibody - middle region (AI10071) in Human Thymus cells using Western Blot  
WB Suggested Anti-LBX1 Antibody Titration: 0.2-1 µg/ml  
ELISA Titer: 1:1562500  
Positive Control: Human Thymus

Please note: All products are 'FOR RESEARCH USE ONLY. NOT FOR USE IN DIAGNOSTIC OR THERAPEUTIC PROCEDURES'.