

# SP2 antibody - N-terminal region

Rabbit Polyclonal Antibody

Catalog # AI10086

## Product Information

---

<b>Application</b>	WB
<b>Primary Accession</b>	<a href="#">Q02086</a>
<b>Other Accession</b>	<a href="#">Q02086</a> , <a href="#">AAH05914</a> , <a href="#">NM_003110</a>
<b>Reactivity</b>	Human, Mouse, Rat, Rabbit, Pig, Dog, Horse, Bovine, Yeast
<b>Predicted</b>	Human, Mouse, Rat, Rabbit, Pig, Horse, Bovine
<b>Host</b>	Rabbit
<b>Clonality</b>	Polyclonal
<b>Calculated MW</b>	64900

## Additional Information

---

<b>Gene ID</b>	6668
<b>Other Names</b>	Transcription factor Sp2, SP2, KIAA0048
<b>Target/Specificity</b>	SP2 is a member of the Sp subfamily of Sp/XKLF transcription factors. Sp family proteins are sequence-specific DNA-binding proteins characterized by an amino-terminal trans-activation domain and three carboxy-terminal zinc finger motifs. This protein contains the least conserved DNA-binding domain within the Sp subfamily of proteins, and its DNA sequence specificity differs from the other Sp proteins. It localizes primarily within subnuclear foci associated with the nuclear matrix, and can activate or in some cases repress expression from different promoters.
<b>Format</b>	Liquid. Purified antibody supplied in 1x PBS buffer with 0.09% (w/v) sodium azide and 2% sucrose.
<b>Reconstitution &amp; Storage</b>	Add 50 ul of distilled water. Final anti-SP2 antibody concentration is 1 mg/ml in PBS buffer with 2% sucrose. For longer periods of storage, store at -20°C. Avoid repeat freeze-thaw cycles.
<b>Precautions</b>	SP2 antibody - N-terminal region is for research use only and not for use in diagnostic or therapeutic procedures.

## Protein Information

---

<b>Name</b>	SP2
<b>Synonyms</b>	KIAA0048
<b>Function</b>	Binds to GC box promoters elements and selectively activates mRNA

synthesis from genes that contain functional recognition sites.

#### Cellular Location

Nucleus.

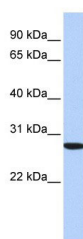
## Background

---

This is a rabbit polyclonal antibody against SP2. It was validated on Western Blot using a cell lysate as a positive control. Abgent strives to provide antibodies covering each member of a whole protein family of your interest. We also use our best efforts to provide you antibodies recognize various epitopes of a target protein. For availability of antibody needed for your experiment, please inquire ([sales@abgent.com](mailto:sales@abgent.com)).

## Images

---



SP2 antibody - N-terminal region (AI10086) in Human  
HepG2 cells using Western Blot  
WB Suggested Anti-SP2 Antibody Titration: 0.2-1 µg/ml  
ELISA Titer: 1:312500  
Positive Control: HepG2 cell lysate

Please note: All products are 'FOR RESEARCH USE ONLY. NOT FOR USE IN DIAGNOSTIC OR THERAPEUTIC PROCEDURES'.