

# PIK3R3 antibody - middle region

Rabbit Polyclonal Antibody

Catalog # AI10093

## Product Information

<b>Application</b>	WB
<b>Primary Accession</b>	<a href="#">Q92569</a>
<b>Other Accession</b>	<a href="#">Q92569</a> , <a href="#">NP_003620</a> , <a href="#">NM_003629</a>
<b>Reactivity</b>	Human, Mouse, Rat, Rabbit, Zebrafish, Pig, Dog, Guinea Pig, Horse, Bovine
<b>Predicted</b>	Human, Mouse, Rat, Rabbit, Zebrafish, Pig, Chicken, Dog, Guinea Pig, Bovine
<b>Host</b>	Rabbit
<b>Clonality</b>	Polyclonal
<b>Calculated MW</b>	54448

## Additional Information

<b>Gene ID</b>	8503
<b>Alias Symbol</b> <b>Other Names</b>	DKFZp686P05226, FLJ41892, p55-GAMMA, p55 Phosphatidylinositol 3-kinase regulatory subunit gamma, PI3-kinase regulatory subunit gamma, PI3K regulatory subunit gamma, PtdIns-3-kinase regulatory subunit gamma, Phosphatidylinositol 3-kinase 55 kDa regulatory subunit gamma, PI3-kinase subunit p55-gamma, PtdIns-3-kinase regulatory subunit p55-gamma, p55PIK, PIK3R3
<b>Target/Specificity</b>	PIK3R3 binds to activated (phosphorylated) protein-tyrosine kinases through its SH2 domain and regulates their kinase activity. During insulin stimulation, it also binds to IRS-1.
<b>Format</b>	Liquid. Purified antibody supplied in 1x PBS buffer with 0.09% (w/v) sodium azide and 2% sucrose.
<b>Reconstitution &amp; Storage</b>	Add 100 ul of distilled water. Final anti-PIK3R3 antibody concentration is 1 mg/ml in PBS buffer with 2% sucrose. For longer periods of storage, store at -20°C. Avoid repeat freeze-thaw cycles.
<b>Precautions</b>	PIK3R3 antibody - middle region is for research use only and not for use in diagnostic or therapeutic procedures.

## Protein Information

<b>Name</b>	PIK3R3
<b>Function</b>	Binds to activated (phosphorylated) protein-tyrosine kinases through its SH2 domain and regulates their kinase activity. During insulin stimulation, it also binds to IRS-1.

**Tissue Location**

Highest levels in brain and testis. Lower levels in adipose tissue, kidney, heart, lung and skeletal muscle

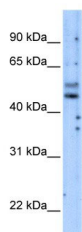
**Background**

---

This is a rabbit polyclonal antibody against PIK3R3. It was validated on Western Blot using a cell lysate as a positive control. Abgent strives to provide antibodies covering each member of a whole protein family of your interest. We also use our best efforts to provide you antibodies recognize various epitopes of a target protein. For availability of antibody needed for your experiment, please inquire ([sales@abgent.com](mailto:sales@abgent.com)).

**Images**

---



PIK3R3 antibody - middle region (AI10093) in Transfected 293T cells using Western Blot  
WB Suggested Anti-PIK3R3 Antibody Titration: 5.0 µg/ml  
Positive Control: Transfected 293T

Please note: All products are 'FOR RESEARCH USE ONLY. NOT FOR USE IN DIAGNOSTIC OR THERAPEUTIC PROCEDURES'.