

# HSPBAP1 antibody - middle region

Rabbit Polyclonal Antibody

Catalog # AI10096

## Product Information

---

<b>Application</b>	WB
<b>Primary Accession</b>	<a href="#">Q96EW2</a>
<b>Other Accession</b>	<a href="#">Q96EW2</a> , <a href="#">NP_078886</a> , <a href="#">NM_024610</a>
<b>Reactivity</b>	Human, Mouse, Rat, Rabbit, Zebrafish, Pig, Dog, Guinea Pig, Horse, Bovine
<b>Predicted</b>	Human, Rat, Rabbit, Pig, Chicken, Dog, Horse
<b>Host</b>	Rabbit
<b>Clonality</b>	Polyclonal
<b>Calculated MW</b>	55167

## Additional Information

---

<b>Gene ID</b>	79663
<b>Alias Symbol</b>	FLJ22623, FLJ39386, PASS1
<b>Other Names</b>	HSPB1-associated protein 1, 27 kDa heat shock protein-associated protein 1, Protein associated with small stress protein 1, HSPBAP1, PASS1
<b>Target/Specificity</b>	HSPBAP1 may play a role in cellular stress response.
<b>Format</b>	Liquid. Purified antibody supplied in 1x PBS buffer with 0.09% (w/v) sodium azide and 2% sucrose.
<b>Reconstitution &amp; Storage</b>	Add 50 ul of distilled water. Final anti-HSPBAP1 antibody concentration is 1 mg/ml in PBS buffer with 2% sucrose. For longer periods of storage, store at -20°C. Avoid repeat freeze-thaw cycles.
<b>Precautions</b>	HSPBAP1 antibody - middle region is for research use only and not for use in diagnostic or therapeutic procedures.

## Protein Information

---

<b>Name</b>	HSPBAP1
<b>Synonyms</b>	PASS1
<b>Function</b>	May play a role in cellular stress response.
<b>Cellular Location</b>	Cytoplasm.
<b>Tissue Location</b>	Widely expressed..

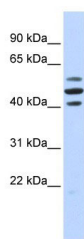
## Background

---

This is a rabbit polyclonal antibody against HSPBAP1. It was validated on Western Blot using a cell lysate as a positive control. Abgent strives to provide antibodies covering each member of a whole protein family of your interest. We also use our best efforts to provide you antibodies recognize various epitopes of a target protein. For availability of antibody needed for your experiment, please inquire ([sales@abgent.com](mailto:sales@abgent.com)).

## Images

---



HSPBAP1 antibody - middle region (AI10096) in Human Brain cells using Western Blot  
WB Suggested Anti-HSPBAP1 Antibody Titration: 0.2-1  $\mu\text{g/ml}$   
ELISA Titer: 1:312500  
Positive Control: Human brain

Please note: All products are 'FOR RESEARCH USE ONLY. NOT FOR USE IN DIAGNOSTIC OR THERAPEUTIC PROCEDURES'.