

KNTC1 antibody - N-terminal region

Rabbit Polyclonal Antibody

Catalog # AI10101

Product Information

Application	WB
Primary Accession	P50748
Other Accession	P50748 , NP_055523 , NM_014708
Reactivity	Human, Mouse, Rat, Rabbit, Dog, Guinea Pig, Horse, Bovine
Predicted	Human, Mouse, Rat, Rabbit, Dog, Guinea Pig, Horse, Bovine
Host	Rabbit
Clonality	Polyclonal
Calculated MW	250749

Additional Information

Gene ID	9735
Alias Symbol	FLJ36151, KIAA0166, ROD
Other Names	Kinetochore-associated protein 1, Rough deal homolog, HsROD, Rod, hRod, KNTC1, KIAA0166
Target/Specificity	This gene encodes a protein that is one of many involved in mechanisms to ensure proper chromosome segregation during cell division. Experimental evidence indicated that the encoded protein functioned in a similar manner to that of the Drosophila rough de
Format	Liquid. Purified antibody supplied in 1x PBS buffer with 0.09% (w/v) sodium azide and 2% sucrose.
Reconstitution & Storage	Add 50 ul of distilled water. Final anti-KNTC1 antibody concentration is 1 mg/ml in PBS buffer with 2% sucrose. For longer periods of storage, store at -20°C. Avoid repeat freeze-thaw cycles.
Precautions	KNTC1 antibody - N-terminal region is for research use only and not for use in diagnostic or therapeutic procedures.

Protein Information

Name	KNTC1
Synonyms	KIAA0166, ROD {ECO:0000303 PubMed:284415
Function	Essential component of the mitotic checkpoint, which prevents cells from prematurely exiting mitosis. Required for the assembly of the dynein-dynactin and MAD1-MAD2 complexes onto kinetochores (PubMed: 11146660 ,

PubMed:[11590237](#), PubMed:[15824131](#)). Its function related to the spindle assembly machinery is proposed to depend on its association in the mitotic RZZ complex.

Cellular Location

Cytoplasm. Nucleus. Chromosome, centromere, kinetochore. Cytoplasm, cytoskeleton, spindle. Note=Dynamic pattern of localization during the cell cycle. At interphase, uniformly distributed throughout the cytoplasm and nucleus. By prophase and until late stages of prometaphase, a fraction of the total pool is concentrated at kinetochores. By metaphase, detected at kinetochores, along spindle fibers and most prominently at the poles. By late anaphase until the end of telophase, no longer detectable on kinetochores or along spindle fibers, but still present at the spindle poles

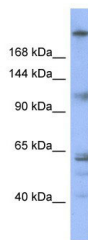
Tissue Location

High expression in testis.

Background

This is a rabbit polyclonal antibody against KNTC1. It was validated on Western Blot using a cell lysate as a positive control. Abgent strives to provide antibodies covering each member of a whole protein family of your interest. We also use our best efforts to provide you antibodies recognize various epitopes of a target protein. For availability of antibody needed for your experiment, please inquire (sales@abgent.com).

Images



KNTC1 antibody - N-terminal region (AI10101) in Human OVCAR-3 cells using Western Blot
WB Suggested Anti-KNTC1 Antibody Titration: 0.2-1 µg/ml
ELISA Titer: 1:62500
Positive Control: OVCAR-3 cell lysate
KNTC1 is supported by BioGPS gene expression data to be expressed in OVCAR3

Please note: All products are 'FOR RESEARCH USE ONLY. NOT FOR USE IN DIAGNOSTIC OR THERAPEUTIC PROCEDURES'.