

PARP6 antibody - N-terminal region

Rabbit Polyclonal Antibody

Catalog # AI10106

Product Information

Application	WB
Primary Accession	Q2NL67
Other Accession	Q2NL67 , NP_064599 , NM_020214
Reactivity	Human, Mouse, Rat, Rabbit, Zebrafish, Pig, Dog, Guinea Pig, Horse, Bovine
Predicted	Human, Mouse, Rat, Rabbit, Zebrafish, Pig, Chicken, Dog, Guinea Pig, Horse, Bovine
Host	Rabbit
Clonality	Polyclonal
Calculated MW	71115

Additional Information

Gene ID	56965
Alias Symbol	MGC131971, pART17
Other Names	Poly [ADP-ribose] polymerase 6, PARP-6, ADP-ribosyltransferase diphtheria toxin-like 17, ARTD17, PARP6
Target/Specificity	Poly(ADP-ribose) polymerases (PARPs) constitute a large family of 18 proteins, encoded by different genes and displaying a conserved catalytic domain. They are involved in DNA-damage-dependent post-translational modification of histones and other nuclear proteins that contributes to the survival of injured proliferating cells.
Format	Liquid. Purified antibody supplied in 1x PBS buffer with 0.09% (w/v) sodium azide and 2% sucrose.
Reconstitution & Storage	Add 50 ul of distilled water. Final anti-PARP6 antibody concentration is 1 mg/ml in PBS buffer with 2% sucrose. For longer periods of storage, store at -20°C. Avoid repeat freeze-thaw cycles.
Precautions	PARP6 antibody - N-terminal region is for research use only and not for use in diagnostic or therapeutic procedures.

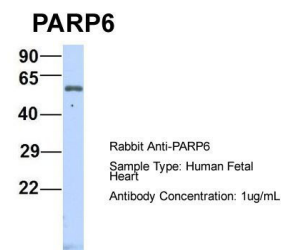
Protein Information

Name	PARP6 (HGNC:26921)
Function	Mono-ADP-ribosyltransferase that mediates mono-ADP- ribosylation of target proteins.

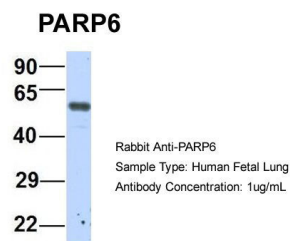
Background

This is a rabbit polyclonal antibody against PARP6. It was validated on Western Blot by Abgent. At Abgent we manufacture rabbit polyclonal antibodies on a large scale (200-1000 products/month) of high throughput manner. Our antibodies are peptide based and protein family oriented. We usually provide antibodies covering each member of a whole protein family of your interest. We also use our best efforts to provide you antibodies recognize various epitopes of a target protein. For availability of antibody needed for your experiment, please inquire (sales@abgent.com).

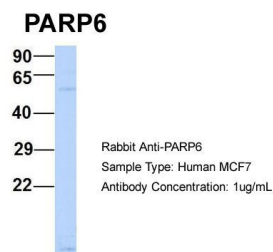
Images



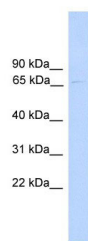
PARP6 antibody - N-terminal region (AI10106) in Hum. Fetal Heart cells using Western Blot
Host:Rabbit
Target Name:PARP6
Sample Tissue:Human Fetal Heart
Antibody Dilution: 1.0 µg/ml



PARP6 antibody - N-terminal region (AI10106) in Hum. Fetal Lung cells using Western Blot
Host:Rabbit
Target Name:PARP6
Sample Tissue:Human Fetal Lung
Antibody Dilution: 1.0 µg/ml



PARP6 antibody - N-terminal region (AI10106) in Human MCF7 cells using Western Blot
Host:Rabbit
Target Name:PARP6
Sample Tissue:Human MCF7
Antibody Dilution: 1.0 µg/ml
PARP6 is supported by BioGPS gene expression data to be expressed in MCF7



PARP6 antibody - N-terminal region (AI10106) in Human 721_B cells using Western Blot
WB Suggested Anti-PARP6 Antibody Titration: 0.2-1 µg/ml
ELISA Titer: 1:12500
Positive Control: 721_B cell lysate

Please note: All products are 'FOR RESEARCH USE ONLY. NOT FOR USE IN DIAGNOSTIC OR THERAPEUTIC PROCEDURES'.