

# USE1 antibody - middle region

Rabbit Polyclonal Antibody

Catalog # AI10112

## Product Information

---

<b>Application</b>	WB, IHC
<b>Primary Accession</b>	<a href="#">Q9NZ43</a>
<b>Other Accession</b>	<a href="#">Q9NZ43</a> , <a href="#">NP_060937</a> , <a href="#">NM_018467</a>
<b>Reactivity</b>	Human, Mouse, Rat, Zebrafish, Dog, Guinea Pig, Horse, Bovine
<b>Predicted</b>	Human, Mouse, Rat, Zebrafish, Pig, Chicken, Dog, Guinea Pig, Bovine
<b>Host</b>	Rabbit
<b>Clonality</b>	Polyclonal
<b>Calculated MW</b>	29371

## Additional Information

---

<b>Gene ID</b>	55850
<b>Alias Symbol</b> <b>Other Names</b>	MDS032, SLT1, p31, P31 Vesicle transport protein USE1, Putative MAPK-activating protein PM26, USE1-like protein, p31, USE1, USE1L
<b>Target/Specificity</b>	MDS032 belongs to the USE1 family and is a component of a SNARE complex which may be involved in targeting and fusion of Golgi-derived retrograde transport vesicles with the ER.
<b>Format</b>	Liquid. Purified antibody supplied in 1x PBS buffer with 0.09% (w/v) sodium azide and 2% sucrose.
<b>Reconstitution &amp; Storage</b>	Add 50 ul of distilled water. Final anti-USE1 antibody concentration is 1 mg/ml in PBS buffer with 2% sucrose. For longer periods of storage, store at -20°C. Avoid repeat freeze-thaw cycles.
<b>Precautions</b>	USE1 antibody - middle region is for research use only and not for use in diagnostic or therapeutic procedures.

## Protein Information

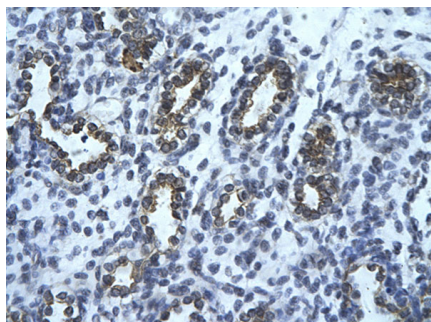
---

<b>Name</b>	USE1
<b>Synonyms</b>	USE1L
<b>Function</b>	SNARE that may be involved in targeting and fusion of Golgi- derived retrograde transport vesicles with the ER.
<b>Cellular Location</b>	Endoplasmic reticulum membrane; Single-pass type IV membrane protein

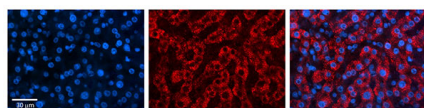
## Background

This is a rabbit polyclonal antibody against USE1. It was validated on Western Blot using a cell lysate as a positive control. Abgent strives to provide antibodies covering each member of a whole protein family of your interest. We also use our best efforts to provide you antibodies recognize various epitopes of a target protein. For availability of antibody needed for your experiment, please inquire (sales@abgent.com).

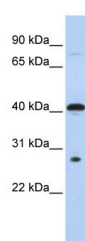
## Images



Human Lung  
Rabbit Anti-USE1 Antibody  
Paraffin Embedded Tissue: Human alveolar cell  
Cellular Data: Epithelial cells of renal tubule  
Antibody Concentration: 4.0-8.0 µg/ml  
Magnification: 400X



USE1 antibody - middle region (AI10112) in Human Liver  
Tissue cells using Immunohistochemistry  
USE1 antibody - middle region (AI10112)  
Catalog Number: AI10112  
Formalin Fixed Paraffin Embedded Tissue: Human Liver  
Tissue  
Observed Staining: Cytoplasm in hepatocytes  
Primary Antibody  
Concentration: 1:100  
Secondary Antibody: Donkey anti-Rabbit-Cy3  
Secondary Antibody  
Concentration: 1:200  
Magnification: 20X  
Exposure Time: 0.5 - 2.0 sec



USE1 antibody - middle region (AI10112) in Human 721\_B  
cells using Western Blot  
WB Suggested Anti-USE1 Antibody Titration: 0.2-1 µg/ml  
ELISA Titer: 1:62500  
Positive Control: 721\_B cell lysate  
USE1 is supported by BioGPS gene expression data to be  
expressed in 721\_B

Please note: All products are 'FOR RESEARCH USE ONLY. NOT FOR USE IN DIAGNOSTIC OR THERAPEUTIC PROCEDURES'.