

MLLT4 antibody - N-terminal region

Rabbit Polyclonal Antibody

Catalog # AI10119

Product Information

Application	WB
Primary Accession	P55196
Other Accession	P55196 , EAW47480 , NM_001040000
Reactivity	Human, Mouse, Rat, Rabbit, Zebrafish, Pig, Dog, Guinea Pig, Horse, Bovine, Yeast
Predicted Host	Human, Mouse, Rat, Zebrafish, Chicken, Dog, Horse, Bovine
Clonality	Rabbit
Calculated MW	Polyclonal 206804

Additional Information

Gene ID	4301
Alias Symbol Other Names	RP3-470B24.4, AF-6, AF6, AFADIN, FLJ34371, RP3-431P23.3 Afadin, ALL1-fused gene from chromosome 6 protein, Protein AF-6, MLLT4, AF6
Target/Specificity	AF6 is a Ras target that regulates cell-cell adhesions downstream of Ras activation. It is fused with MLL in leukemias caused by t(6, 11) translocations.
Format	Liquid. Purified antibody supplied in 1x PBS buffer with 0.09% (w/v) sodium azide and 2% sucrose.
Reconstitution & Storage	Add 100 ul of distilled water. Final anti-MLLT4 antibody concentration is 1 mg/ml in PBS buffer with 2% sucrose. For longer periods of storage, store at -20°C. Avoid repeat freeze-thaw cycles.
Precautions	MLLT4 antibody - N-terminal region is for research use only and not for use in diagnostic or therapeutic procedures.

Protein Information

Name	AFDN (HGNC:7137)
Synonyms	AF6, MLLT4
Function	Belongs to an adhesion system, probably together with the E-cadherin-catenin system, which plays a role in the organization of homotypic, interneuronal and heterotypic cell-cell adherens junctions (AJs) (By similarity). Nectin- and actin-filament-binding protein that connects nectin to the actin

cytoskeleton (PubMed:[11024295](#)). May play a key role in the organization of epithelial structures of the embryonic ectoderm (By similarity). Essential for the organization of adherens junctions (PubMed:[30463011](#)).

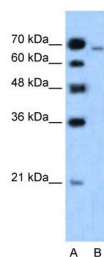
Cellular Location

Cell junction, adherens junction. Note=Not found at cell-matrix AJs {ECO:0000250|UniProtKB:O35889}

Background

This is a rabbit polyclonal antibody against MLLT4. It was validated on Western Blot using a cell lysate as a positive control. Abgent strives to provide antibodies covering each member of a whole protein family of your interest. We also use our best efforts to provide you antibodies recognize various epitopes of a target protein. For availability of antibody needed for your experiment, please inquire (sales@abgent.com).

Images



MLLT4 antibody - N-terminal region (AI10119) in Human HepG2 cells using Western Blot
WB Suggested Anti-MLLT4 Antibody Titration: 1.25 µg/ml
ELISA Titer: 1:312500
Positive Control: HepG2 cell lysate
MLLT4 is strongly supported by BioGPS gene expression data to be expressed in Human HepG2 cells

Please note: All products are 'FOR RESEARCH USE ONLY. NOT FOR USE IN DIAGNOSTIC OR THERAPEUTIC PROCEDURES'.