

# AFF2 antibody - N-terminal region

Rabbit Polyclonal Antibody

Catalog # AI10120

## Product Information

---

<b>Application</b>	WB
<b>Primary Accession</b>	<a href="#">P51816</a>
<b>Other Accession</b>	<a href="#">P51816</a> , <a href="#">NP_002016</a> , <a href="#">NM_002025</a>
<b>Reactivity</b>	Human, Mouse, Rat, Rabbit, Zebrafish, Pig, Dog, Guinea Pig, Horse, Bovine
<b>Predicted</b>	Human, Mouse, Rat, Rabbit, Pig, Guinea Pig, Horse, Bovine
<b>Host</b>	Rabbit
<b>Clonality</b>	Polyclonal
<b>Calculated MW</b>	144771

## Additional Information

---

<b>Gene ID</b>	2334
<b>Alias Symbol</b>	FMR2, FRAXE, MRX2, OX19, FMR2P
<b>Other Names</b>	AF4/FMR2 family member 2, Fragile X E mental retardation syndrome protein, Fragile X mental retardation 2 protein, FMR2P, Protein FMR-2, Protein Ox19, AFF2, FMR2, OX19
<b>Target/Specificity</b>	AFF2 belongs to the AF4 family. Defects in AFF2 are the cause of FRAXE. The exact function of AFF2 remains unknown.
<b>Format</b>	Liquid. Purified antibody supplied in 1x PBS buffer with 0.09% (w/v) sodium azide and 2% sucrose.
<b>Reconstitution &amp; Storage</b>	Add 50 ul of distilled water. Final anti-AFF2 antibody concentration is 1 mg/ml in PBS buffer with 2% sucrose. For longer periods of storage, store at -20°C. Avoid repeat freeze-thaw cycles.
<b>Precautions</b>	AFF2 antibody - N-terminal region is for research use only and not for use in diagnostic or therapeutic procedures.

## Protein Information

---

<b>Name</b>	AFF2 ( <a href="#">HGNC:3776</a> )
<b>Synonyms</b>	FMR2, OX19
<b>Function</b>	RNA-binding protein. Might be involved in alternative splicing regulation through an interaction with G-quartet RNA structure.
<b>Cellular Location</b>	Nucleus speckle. Note=When splicing is inhibited, accumulates in enlarged

speckles

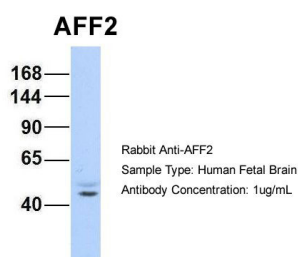
## Tissue Location

Brain (most abundant in hippocampus and amygdala), placenta and lung

## Background

This is a rabbit polyclonal antibody against AFF2. It was validated on Western Blot using a cell lysate as a positive control. Abgent strives to provide antibodies covering each member of a whole protein family of your interest. We also use our best efforts to provide you antibodies recognize various epitopes of a target protein. For availability of antibody needed for your experiment, please inquire ([sales@abgent.com](mailto:sales@abgent.com)).

## Images



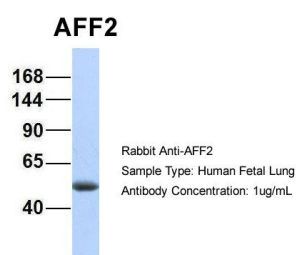
AFF2 antibody - N-terminal region (AI10120) in Hum. Fetal Brain cells using Western Blot

Host:Rabbit

Target Name:AFF2

Sample Tissue:Human Fetal Brain

Antibody Dilution: 1.0 µg/ml



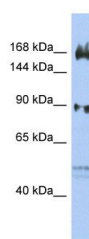
AFF2 antibody - N-terminal region (AI10120) in Hum. Fetal Lung cells using Western Blot

Host:Rabbit

Target Name:AFF2

Sample Tissue:Human Fetal Lung

Antibody Dilution: 1.0 µg/ml



AFF2 antibody - N-terminal region (AI10120) in Human OVCAR3 cells using Western Blot

WB Suggested Anti-AFF2 Antibody Titration: 0.2-1 µg/ml

ELISA Titer: 1:62500

Positive Control: OVCAR-3 cell lysate

AFF2 is strongly supported by BioGPS gene expression data to be expressed in Human OVCAR3 cells

Please note: All products are 'FOR RESEARCH USE ONLY. NOT FOR USE IN DIAGNOSTIC OR THERAPEUTIC PROCEDURES'.