

# PHF16 antibody - middle region

Rabbit Polyclonal Antibody

Catalog # AI10126

## Product Information

---

<b>Application</b>	WB, IHC
<b>Primary Accession</b>	<a href="#">Q92613</a>
<b>Other Accession</b>	<a href="#">Q92613</a> , <a href="#">NP_055550</a> , <a href="#">NM_014735</a>
<b>Reactivity</b>	Human, Mouse, Rat, Rabbit, Pig, Dog, Guinea Pig, Horse, Bovine
<b>Predicted</b>	Mouse, Rabbit, Pig, Dog, Guinea Pig, Horse, Bovine
<b>Host</b>	Rabbit
<b>Clonality</b>	Polyclonal
<b>Calculated MW</b>	93808

## Additional Information

---

<b>Gene ID</b>	9767
<b>Alias Symbol</b>	JADE3, KIAA0215, MGC138748, MGC138749
<b>Other Names</b>	Protein Jade-3, Jade family PHD finger protein 3, PHD finger protein 16, JADE3, KIAA0215, PHF16
<b>Target/Specificity</b>	<p>This gene is part of a gene cluster on chromosome Xp11.23. PHF16 contains a zinc finger motif often found in transcriptional regulators, however, its exact function is not known. This gene is part of a gene cluster on chromosome Xp11.23. The encoded protein contains a zinc finger motif often found in transcriptional regulators, however, its exact function is not known. Alternative splicing results in multiple transcript variants encoding the same protein.</p>
<b>Format</b>	Liquid. Purified antibody supplied in 1x PBS buffer with 0.09% (w/v) sodium azide and 2% sucrose.
<b>Reconstitution &amp; Storage</b>	Add 50 ul of distilled water. Final anti-PHF16 antibody concentration is 1 mg/ml in PBS buffer with 2% sucrose. For longer periods of storage, store at -20°C. Avoid repeat freeze-thaw cycles.
<b>Precautions</b>	PHF16 antibody - middle region is for research use only and not for use in diagnostic or therapeutic procedures.

## Protein Information

---

<b>Name</b>	JADE3
<b>Synonyms</b>	KIAA0215, PHF16

**Function** Scaffold subunit of some HBO1 complexes, which have a histone H4 acetyltransferase activity.

**Tissue Location** Ubiquitously expressed, with highest levels in placenta and uterus.

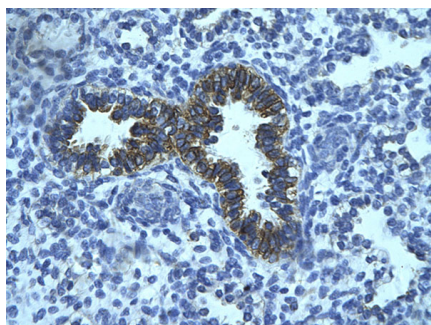
## Background

---

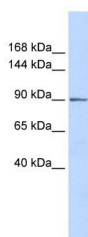
This is a rabbit polyclonal antibody against PHF16. It was validated on Western Blot using a cell lysate as a positive control. Abgent strives to provide antibodies covering each member of a whole protein family of your interest. We also use our best efforts to provide you antibodies recognize various epitopes of a target protein. For availability of antibody needed for your experiment, please inquire ([sales@abgent.com](mailto:sales@abgent.com)).

## Images

---



Human Lung  
Rabbit Anti-PHF16 Antibody  
Paraffin Embedded Tissue: Human bronchiole epithelium  
Cellular Data: Epithelial cells of renal tubule  
Antibody Concentration: 4.0-8.0 µg/ml  
Magnification: 400X



PHF16 antibody - middle region (AI10126) in Human Placenta cells using Western Blot  
WB Suggested Anti-PHF16 Antibody Titration: 0.2-1 µg/ml  
ELISA Titer: 1:312500  
Positive Control: Human Placenta

Please note: All products are 'FOR RESEARCH USE ONLY. NOT FOR USE IN DIAGNOSTIC OR THERAPEUTIC PROCEDURES'.