

RCOR1 antibody - middle region

Rabbit Polyclonal Antibody

Catalog # AI10129

Product Information

Application	WB, IHC
Primary Accession	Q9UKL0
Other Accession	Q9UKL0 , NP_055971 , NM_015156
Reactivity	Human, Mouse, Rat, Dog, Guinea Pig, Horse, Bovine
Predicted	Human, Mouse, Pig, Chicken, Dog, Guinea Pig, Horse, Bovine
Host	Rabbit
Clonality	Polyclonal
Calculated MW	53327

Additional Information

Gene ID	23186
Alias Symbol	COREST, KIAA0071, RCOR
Other Names	REST corepressor 1, Protein CoREST, RCOR1, KIAA0071, RCOR
Target/Specificity	RCOR1 is a functional corepressor required for regulation of neural-specific gene expression. The RCOR gene encodes a functional corepressor required for regulation of neural-specific gene expression. The RCOR gene encodes a functional corepressor required for regulation of neural-specific gene expression. [supplied by OMIM]. Publication Note: This RefSeq record includes a subset of the publications that are available for this gene. Please see the Entrez Gene record to access additional publications.
Format	Liquid. Purified antibody supplied in 1x PBS buffer with 0.09% (w/v) sodium azide and 2% sucrose.
Reconstitution & Storage	Add 50 ul of distilled water. Final anti-RCOR1 antibody concentration is 1 mg/ml in PBS buffer with 2% sucrose. For longer periods of storage, store at -20°C. Avoid repeat freeze-thaw cycles.
Precautions	RCOR1 antibody - middle region is for research use only and not for use in diagnostic or therapeutic procedures.

Protein Information

Name	RCOR1
Synonyms	KIAA0071, RCOR
Function	Essential component of the BHC complex, a corepressor complex that

represses transcription of neuron-specific genes in non-neuronal cells. The BHC complex is recruited at RE1/NRSE sites by REST and acts by deacetylating and demethylating specific sites on histones, thereby acting as a chromatin modifier. In the BHC complex, it serves as a molecular beacon for the recruitment of molecular machinery, including MeCP2 and SUV39H1, that imposes silencing across a chromosomal interval. Plays a central role in demethylation of Lys-4 of histone H3 by promoting demethylase activity of KDM1A on core histones and nucleosomal substrates. It also protects KDM1A from the proteasome. Component of a RCOR/GFI/KDM1A/HDAC complex that suppresses, via histone deacetylase (HDAC) recruitment, a number of genes implicated in multilineage blood cell development and controls hematopoietic differentiation.

Cellular Location

Nucleus {ECO:0000255 | PROSITE-ProRule:PRU00512, ECO:0000255 | PROSITE-ProRule:PRU00624, ECO:0000269 | PubMed:10734093, ECO:0000269 | PubMed:15897453}. Note=Upon infection by HSV-1, it is partially translocated into the cytoplasm in an HSV-1-dependent manner

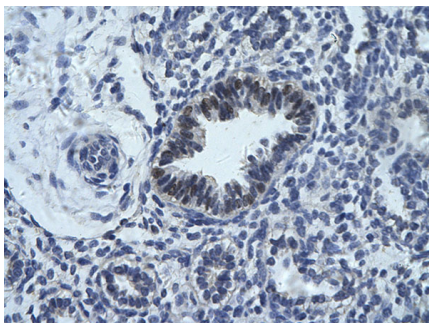
Tissue Location

Ubiquitously expressed.

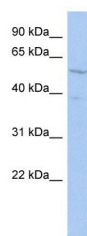
Background

This is a rabbit polyclonal antibody against RCOR1. It was validated on Western Blot using a cell lysate as a positive control. Abgent strives to provide antibodies covering each member of a whole protein family of your interest. We also use our best efforts to provide you antibodies recognize various epitopes of a target protein. For availability of antibody needed for your experiment, please inquire (sales@abgent.com).

Images



Human Lung
Rabbit Anti-RCOR1 Antibody
Paraffin Embedded Tissue: Human bronchiole epithelium
Cellular Data: Epithelial cells of renal tubule
Antibody Concentration: 4.0-8.0 µg/ml
Magnification: 400X



RCOR1 antibody - middle region (AI10129) in Human HT1080 cells using Western Blot
WB Suggested Anti-RCOR1 Antibody Titration: 0.2-1 µg/ml
ELISA Titer: 1:62500
Positive Control: HT1080 cell lysate
RCOR1 is supported by BioGPS gene expression data to be expressed in HT1080

Please note: All products are 'FOR RESEARCH USE ONLY. NOT FOR USE IN DIAGNOSTIC OR THERAPEUTIC PROCEDURES'.