

FHL2 antibody - C-terminal region

Rabbit Polyclonal Antibody

Catalog # AI10132

Product Information

Application	WB, IHC
Primary Accession	Q14192
Other Accession	Q14192 , NP_963849 , NM_201555
Reactivity	Human, Mouse, Rat, Rabbit, Zebrafish, Dog, Guinea Pig, Horse, Bovine
Predicted	Human, Mouse, Rat, Rabbit, Zebrafish, Chicken, Dog, Horse, Bovine
Host	Rabbit
Clonality	Polyclonal
Calculated MW	32193

Additional Information

Gene ID	2274
Alias Symbol	DRAL, AAG11, FHL-2, SLIM3, SLIM-3
Other Names	Four and a half LIM domains protein 2, FHL-2, LIM domain protein DRAL, Skeletal muscle LIM-protein 3, SLIM-3, FHL2, DRAL, SLIM3
Target/Specificity	FHL2 is a member of LIM proteins that contain a highly conserved double zinc finger motif called the LIM domain.
Format	Liquid. Purified antibody supplied in 1x PBS buffer with 0.09% (w/v) sodium azide and 2% sucrose.
Reconstitution & Storage	Add 100 ul of distilled water. Final anti-FHL2 antibody concentration is 1 mg/ml in PBS buffer with 2% sucrose. For longer periods of storage, store at -20°C. Avoid repeat freeze-thaw cycles.
Precautions	FHL2 antibody - C-terminal region is for research use only and not for use in diagnostic or therapeutic procedures.

Protein Information

Name	FHL2
Synonyms	DRAL, SLIM3
Function	May function as a molecular transmitter linking various signaling pathways to transcriptional regulation. Negatively regulates the transcriptional repressor E4F1 and may function in cell growth. Inhibits the transcriptional activity of FOXO1 and its apoptotic function by enhancing the interaction of FOXO1 with SIRT1 and FOXO1 deacetylation. Negatively regulates the

calcineurin/NFAT signaling pathway in cardiomyocytes (PubMed:[28717008](#)).

Cellular Location

Cytoplasm. Nucleus. Cytoplasm, myofibril, sarcomere, Z line
{ECO:0000250|UniProtKB:O35115}

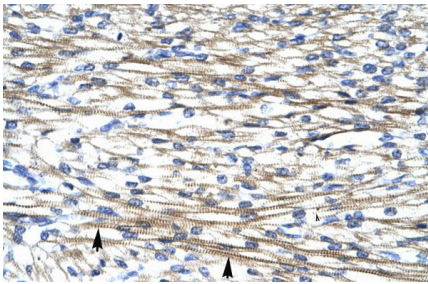
Tissue Location

Expressed in skeletal muscle and heart.

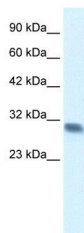
Background

This is a rabbit polyclonal antibody against FHL2. It was validated on Western Blot and immunohistochemistry by Abgent. At Abgent we manufacture rabbit polyclonal antibodies on a large scale (200-1000 products/month) of high throughput manner. Our antibodies are peptide based and protein family oriented. We usually provide antibodies covering each member of a whole protein family of your interest. We also use our best efforts to provide you antibodies recognize various epitopes of a target protein. For availability of antibody needed for your experiment, please inquire (sales@abgent.com).

Images



FHL2 antibody - C-terminal region (AI10132) in Human Heart cells using Immunohistochemistry
Human Heart



FHL2 antibody - C-terminal region (AI10132) in Human heart cells using Western Blot
WB Suggested Anti-FHL2 Antibody Titration: 0.6 µg/ml
ELISA Titer: 1:312500
Positive Control: Human heart

Please note: All products are 'FOR RESEARCH USE ONLY. NOT FOR USE IN DIAGNOSTIC OR THERAPEUTIC PROCEDURES'.