

# ERGIC2 antibody - middle region

Rabbit Polyclonal Antibody

Catalog # AI10136

## Product Information

<b>Application</b>	WB
<b>Primary Accession</b>	<a href="#">Q96RQ1</a>
<b>Other Accession</b>	<a href="#">Q96RQ1</a> , <a href="#">NP_057654</a> , <a href="#">NM_016570</a>
<b>Reactivity</b>	Human, Mouse, Rat, Rabbit, Zebrafish, Pig, Dog, Guinea Pig, Horse, Bovine
<b>Predicted</b>	Human, Mouse, Rat, Pig, Chicken, Dog, Guinea Pig, Bovine
<b>Host</b>	Rabbit
<b>Clonality</b>	Polyclonal
<b>Calculated MW</b>	42549

## Additional Information

<b>Gene ID</b>	51290
<b>Alias Symbol</b>	CDA14, Erv41, MGC111152, PTX1, cd002
<b>Other Names</b>	Endoplasmic reticulum-Golgi intermediate compartment protein 2, ERGIC2, ERV41, PTX1
<b>Target/Specificity</b>	ERGIC2 belongs to the ERGIC family. It possible play role in transport between endoplasmic reticulum and Golgi.
<b>Format</b>	Liquid. Purified antibody supplied in 1x PBS buffer with 0.09% (w/v) sodium azide and 2% sucrose.
<b>Reconstitution &amp; Storage</b>	Add 50 ul of distilled water. Final anti-ERGIC2 antibody concentration is 1 mg/ml in PBS buffer with 2% sucrose. For longer periods of storage, store at -20°C. Avoid repeat freeze-thaw cycles.
<b>Precautions</b>	ERGIC2 antibody - middle region is for research use only and not for use in diagnostic or therapeutic procedures.

## Protein Information

<b>Name</b>	ERGIC2
<b>Synonyms</b>	ERV41, PTX1
<b>Function</b>	Possible role in transport between endoplasmic reticulum and Golgi.
<b>Cellular Location</b>	Endoplasmic reticulum-Golgi intermediate compartment membrane; Multi-pass membrane protein. Golgi apparatus, cis-Golgi network membrane; Multi-pass membrane protein. Endoplasmic reticulum membrane; Multi-pass

membrane protein. Cytoplasm. Nucleus Note=Cycles between the endoplasmic reticulum and the Golgi. According to a report, localizes to the nucleus (PubMed:11445006). Another report shows a partial localization in the nucleus (PubMed:17980171)

#### Tissue Location

Ubiquitously expressed.

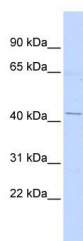
## Background

---

This is a rabbit polyclonal antibody against ERGIC2. It was validated on Western Blot using a cell lysate as a positive control. Abgent strives to provide antibodies covering each member of a whole protein family of your interest. We also use our best efforts to provide you antibodies recognize various epitopes of a target protein. For availability of antibody needed for your experiment, please inquire (sales@abgent.com).

## Images

---



ERGIC2 antibody - middle region (AI10136) in Human Lung cells using Western Blot  
WB Suggested Anti-ERGIC2 Antibody Titration: 0.2-1 µg/ml  
ELISA Titer: 1:62500  
Positive Control: Human Lung

Please note: All products are 'FOR RESEARCH USE ONLY. NOT FOR USE IN DIAGNOSTIC OR THERAPEUTIC PROCEDURES'.