

PHF21A antibody - middle region

Rabbit Polyclonal Antibody

Catalog # AI10137

Product Information

Application	WB
Primary Accession	Q96BD5
Other Accession	Q96BD5-2 , NP_057705 , NM_016621
Reactivity	Human, Rat, Rabbit, Dog, Guinea Pig, Horse, Bovine
Predicted	Rat, Pig, Dog, Guinea Pig, Horse, Bovine
Host	Rabbit
Clonality	Polyclonal
Calculated MW	74854

Additional Information

Gene ID	51317
Alias Symbol	BHC80, BM-006, KIAA1696
Other Names	PHD finger protein 21A, BHC80a, BRAF35-HDAC complex protein BHC80, PHF21A, BHC80, KIAA1696
Target/Specificity	PHF21A (BHC80) is a component of a BRAF35/histone deacetylase complex (BHC) that mediates repression of neuron-specific genes through the cis-regulatory element known as repressor element-1 (RE1) or neural restrictive silencer (NRS). BHC80 is a component of a BRAF35 (MIM 605535)/histone deacetylase (HDAC, see MIM 601241) complex (BHC) that mediates repression of neuron-specific genes through the cis-regulatory element known as repressor element-1 (RE1) or neural restrictive silencer (NRS) (Hakimi et al., 2002 [PubMed 12032298]).[supplied by OMIM].
Format	Liquid. Purified antibody supplied in 1x PBS buffer with 0.09% (w/v) sodium azide and 2% sucrose.
Reconstitution & Storage	Add 50 ul of distilled water. Final anti-PHF21A antibody concentration is 1 mg/ml in PBS buffer with 2% sucrose. For longer periods of storage, store at -20°C. Avoid repeat freeze-thaw cycles.
Precautions	PHF21A antibody - middle region is for research use only and not for use in diagnostic or therapeutic procedures.

Protein Information

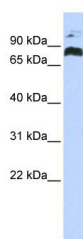
Name	PHF21A
Synonyms	BHC80, KIAA1696

Function	Component of the BHC complex, a corepressor complex that represses transcription of neuron-specific genes in non-neuronal cells. The BHC complex is recruited at RE1/NRSE sites by REST and acts by deacetylating and demethylating specific sites on histones, thereby acting as a chromatin modifier. In the BHC complex, it may act as a scaffold. Inhibits KDM1A-mediated demethylation of 'Lys-4' of histone H3 in vitro, suggesting a role in demethylation regulation.
Cellular Location	Nucleus.
Tissue Location	Highly expressed in brain (PubMed:31649809). Expressed at lower level in other tissues, including heart, kidney, liver, lung and skeletal muscle (PubMed:31649809). Abundantly expressed in fetal brain (PubMed:31649809).

Background

This is a rabbit polyclonal antibody against PHF21A. It was validated on Western Blot using a cell lysate as a positive control. Abgent strives to provide antibodies covering each member of a whole protein family of your interest. We also use our best efforts to provide you antibodies recognize various epitopes of a target protein. For availability of antibody needed for your experiment, please inquire (sales@abgent.com).

Images



PHF21A antibody - middle region (AI10137) in Human Jurkat cells using Western Blot
 WB Suggested Anti-PHF21A Antibody Titration: 0.2-1 µg/ml
 ELISA Titer: 1:1562500
 Positive Control: Jurkat cell lysate

Please note: All products are 'FOR RESEARCH USE ONLY. NOT FOR USE IN DIAGNOSTIC OR THERAPEUTIC PROCEDURES'.