

LAS1L Antibody - middle region

Rabbit Polyclonal Antibody

Catalog # AI10141

Product Information

| | |
|-------------------|--|
| Application | WB |
| Primary Accession | Q9Y4W2 |
| Other Accession | Q9Y4W2 , NP_112483 , NM_031206 |
| Reactivity | Human, Bovine, Horse |
| Predicted | Human, Bovine, Horse |
| Host | Rabbit |
| Clonality | Polyclonal |
| Calculated MW | 83065 |

Additional Information

| | |
|--------------------------|---|
| Gene ID | 81887 |
| Alias Symbol | Las1-like, dj475B7.2 |
| Other Names | Ribosomal biogenesis protein LAS1L, Protein LAS1 homolog, LAS1L |
| Target/Specificity | The function of LAS1L has not been determined. |
| Format | Liquid. Purified antibody supplied in 1x PBS buffer with 0.09% (w/v) sodium azide and 2% sucrose. |
| Reconstitution & Storage | Add 50 ul of distilled water. Final anti-LAS1L antibody concentration is 1 mg/ml in PBS buffer with 2% sucrose. For longer periods of storage, store at -20°C. Avoid repeat freeze-thaw cycles. |
| Precautions | LAS1L Antibody - middle region is for research use only and not for use in diagnostic or therapeutic procedures. |

Protein Information

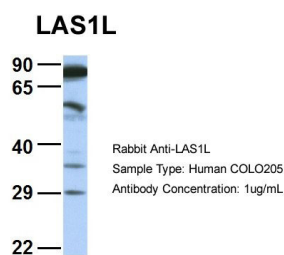
| | |
|-------------------|--|
| Name | LAS1L |
| Function | Required for the synthesis of the 60S ribosomal subunit and maturation of the 28S rRNA (PubMed: 20647540). Functions as a component of the Five Friends of Methylated CHTOP (5FMC) complex; the 5FMC complex is recruited to ZNF148 by methylated CHTOP, leading to desumoylation of ZNF148 and subsequent transactivation of ZNF148 target genes (PubMed: 22872859). Required for the efficient pre-rRNA processing at both ends of internal transcribed spacer 2 (ITS2) (PubMed: 22083961). |
| Cellular Location | Nucleus, nucleolus. Nucleus, nucleoplasm {ECO:0000250 UniProtKB:A2BE28}. |

Cytoplasm {ECO:0000250|UniProtKB:A2BE28}. Note=Mainly found in the nucleoplasm, with low levels detected in the cytoplasmic and chromatin fractions (By similarity). Localizes mainly to the granular component, the region implicated in the later steps of rRNA processing and subunit assembly and export. {ECO:0000250|UniProtKB:A2BE28}

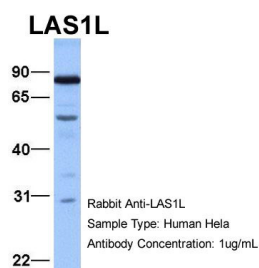
Background

This is a rabbit polyclonal antibody against LAS1L. It was validated on Western Blot by Abgent. At Abgent we manufacture rabbit polyclonal antibodies on a large scale (200-1000 products/month) of high throughput manner. Our antibodies are peptide based and protein family oriented. We usually provide antibodies covering each member of a whole protein family of your interest. We also use our best efforts to provide you antibodies recognize various epitopes of a target protein. For availability of antibody needed for your experiment, please inquire (sales@abgent.com).

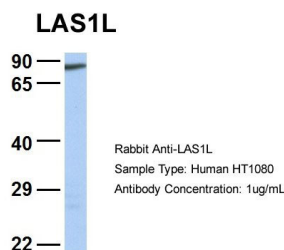
Images



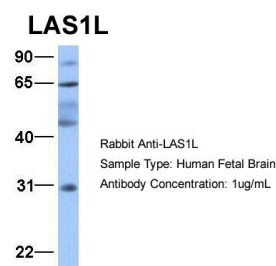
LAS1L Antibody - middle region (AI10141) in Human COLO205 cells using Western Blot
Host: Rabbit
Target Name: LAS1L
Sample Tissue: COLO205
Antibody Dilution: 1.0 µg/ml LAS1L is supported by BioGPS gene expression data to be expressed in COLO205



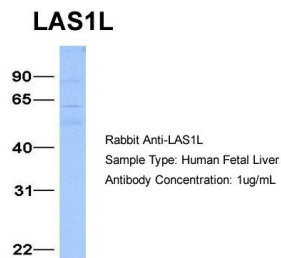
LAS1L Antibody - middle region (AI10141) in Human HeLa cells using Western Blot
Host: Rabbit
Target Name: LAS1L
Sample Tissue: HeLa
Antibody Dilution: 1.0 µg/ml LAS1L is supported by BioGPS gene expression data to be expressed in HeLa



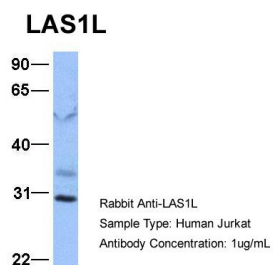
LAS1L Antibody - middle region (AI10141) in Human HT1080 cells using Western Blot
Host: Rabbit
Target Name: LAS1L
Sample Tissue: HT1080
Antibody Dilution: 1.0 µg/ml
LAS1L is supported by BioGPS gene expression data to be expressed in HT1080



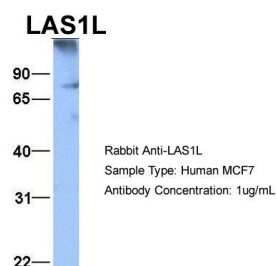
LAS1L Antibody - middle region (AI10141) in Hum. Fetal Brain cells using Western Blot
Host: Rabbit
Target Name: LAS1L
Sample Tissue: Human Fetal Brain
Antibody Dilution: 1.0 µg/ml



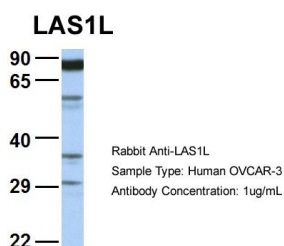
LAS1L Antibody - middle region (AI10141) in Hum. Fetal Liver cells using Western Blot
Host: Rabbit
Target Name: LAS1L
Sample Tissue: Human Fetal Liver
Antibody Dilution: 1.0 µg/ml



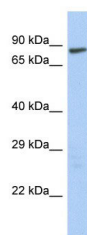
LAS1L Antibody - middle region (AI10141) in Human Jurkat cells using Western Blot
Host: Rabbit
Target Name: LAS1L
Sample Tissue: Jurkat
Antibody Dilution: 1.0µg/mL
LAS1L is supported by BioGPS gene expression data to be expressed in Jurkat



LAS1L Antibody - middle region (AI10141) in Human MCF7 cells using Western Blot
Host: Rabbit
Target Name: LAS1L
Sample Tissue: MCF7
Antibody Dilution: 1.0 µg/mL
LAS1L is supported by BioGPS gene expression data to be expressed in MCF7



LAS1L Antibody - middle region (AI10141) in Human OVCAR-3 cells using Western Blot
Host: Rabbit
Target Name: LAS1L
Sample Tissue: OVCAR-3
Antibody Dilution: 1.0ug/mL
LAS1L is supported by BioGPS gene expression data to be expressed in OVCAR3



LAS1L Antibody - middle region (AI10141) in Human HepG2 cells using Western Blot
WB Suggested Anti-LAS1L Antibody Titration: 0.2-1 ug/ml
Positive Control: HepG2 cell lysate

Please note: All products are 'FOR RESEARCH USE ONLY. NOT FOR USE IN DIAGNOSTIC OR THERAPEUTIC PROCEDURES'.