

# RIMS3 antibody - C-terminal region

Rabbit Polyclonal Antibody

Catalog # AI10145

## Product Information

---

<b>Application</b>	WB, IHC
<b>Primary Accession</b>	<a href="#">Q9UJD0</a>
<b>Other Accession</b>	<a href="#">Q9UJD0</a> , <a href="#">NP_055562</a> , <a href="#">NM_014747</a>
<b>Reactivity</b>	Human, Mouse, Rat, Rabbit, Zebrafish, Dog, Guinea Pig, Horse, Bovine
<b>Predicted</b>	Human, Mouse, Rat, Rabbit, Zebrafish, Pig, Chicken, Dog, Bovine
<b>Host</b>	Rabbit
<b>Clonality</b>	Polyclonal
<b>Calculated MW</b>	32796

## Additional Information

---

<b>Gene ID</b>	9783
<b>Alias Symbol</b>	NIM3, RIM3
<b>Other Names</b>	Regulating synaptic membrane exocytosis protein 3, Nim3, RIM3 gamma, Rab-3-interacting molecule 3, RIM 3, RIMS3, KIAA0237
<b>Target/Specificity</b>	RIMS3 belongs to a family of synaptic proteins that are essential for normal neurotransmitter release.
<b>Format</b>	Liquid. Purified antibody supplied in 1x PBS buffer with 0.09% (w/v) sodium azide and 2% sucrose.
<b>Reconstitution &amp; Storage</b>	Add 100 ul of distilled water. Final anti-RIMS3 antibody concentration is 1 mg/ml in PBS buffer with 2% sucrose. For longer periods of storage, store at -20°C. Avoid repeat freeze-thaw cycles.
<b>Precautions</b>	RIMS3 antibody - C-terminal region is for research use only and not for use in diagnostic or therapeutic procedures.

## Protein Information

---

<b>Name</b>	RIMS3
<b>Synonyms</b>	KIAA0237
<b>Function</b>	Regulates synaptic membrane exocytosis.
<b>Cellular Location</b>	Synapse.

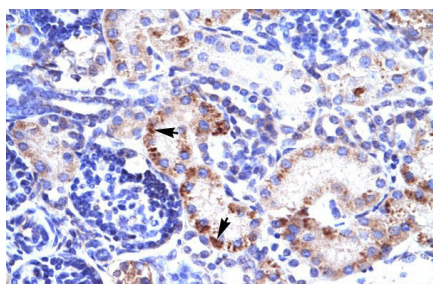
## Background

---

This is a rabbit polyclonal antibody against RIMS3. It was validated on Western Blot and immunohistochemistry by Abgent. At Abgent we manufacture rabbit polyclonal antibodies on a large scale (200-1000 products/month) of high throughput manner. Our antibodies are peptide based and protein family oriented. We usually provide antibodies covering each member of a whole protein family of your interest. We also use our best efforts to provide you antibodies recognize various epitopes of a target protein. For availability of antibody needed for your experiment, please inquire (sales@abgent.com).

## Images

---



RIMS3 antibody - C-terminal region (AI10145) in Human kidney cells using Immunohistochemistry  
Human kidney



RIMS3 antibody - C-terminal region (AI10145) in Human Jurkat cells using Western Blot  
WB Suggested Anti-RIMS3 Antibody Titration: 1.25 µg/ml  
ELISA Titer: 1:312500  
Positive Control: Jurkat cell lysate  
RIMS3 is strongly supported by BioGPS gene expression data to be expressed in Human Jurkat cells

Please note: All products are 'FOR RESEARCH USE ONLY. NOT FOR USE IN DIAGNOSTIC OR THERAPEUTIC PROCEDURES'.