

# CXorf26 (chromosome X open reading frame 26)

## Antibody

Mouse Antibody  
Catalog # AI10157

### Product Information

---

<b>Application</b>	WB
<b>Primary Accession</b>	<a href="#">Q9BVG4</a>
<b>Other Accession</b>	<a href="#">NP_057584</a>
<b>Reactivity</b>	Human
<b>Host</b>	Mouse
<b>Clone Names</b>	2D6
<b>Calculated MW</b>	26057

### Additional Information

---

<b>Gene ID</b>	51260
<b>Alias Symbol</b> <b>Other Names</b>	CXorf26, Protein PBDC1, Polysaccharide biosynthesis domain-containing protein 1, PBDC1, CXorf26
<b>Format</b>	Liquid. Purified antibody supplied in 1x PBS buffer with 0.09% (w/v) sodium azide and 2% sucrose.
<b>Reconstitution &amp; Storage</b>	Add 100ul of distilled water. Final antibody concentration is 1 mg/ml in PBS buffer. For longer periods of storage, store at -20°C. Avoid repeat freeze-thaw cycles.
<b>Precautions</b>	CXorf26 (chromosome X open reading frame 26) Antibody is for research use only and not for use in diagnostic or therapeutic procedures.

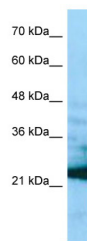
### Protein Information

---

<b>Name</b>	PBDC1
<b>Synonyms</b>	CXorf26

### Images

---



Please note: All products are 'FOR RESEARCH USE ONLY. NOT FOR USE IN DIAGNOSTIC OR THERAPEUTIC PROCEDURES'.