

RGD1560888 Antibody - N-terminal region

Rabbit Polyclonal Antibody

Catalog # AI10172

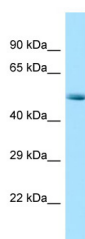
Product Information

Application	WB
Other Accession	NM_001109061 , NP_001102531
Reactivity	Human, Mouse, Rat, Zebrafish, Dog, Horse
Predicted	Human, Mouse, Rat, Zebrafish, Pig, Dog, Guinea Pig
Host	Rabbit
Clonality	Polyclonal
Calculated MW	51 kDa

Additional Information

Format	Liquid. Purified antibody supplied in 1x PBS buffer with 0.09% (w/v) sodium azide and 2% sucrose.
Reconstitution & Storage	Add 50 ul of distilled water. Final anti-RGD1560888 antibody concentration is 1 mg/ml in PBS buffer with 2% sucrose. For longer periods of storage, store at 20°C. Avoid repeat freeze-thaw cycles.
Precautions	RGD1560888 Antibody - N-terminal region is for research use only and not for use in diagnostic or therapeutic procedures.

Images



Host: Rabbit
Target Name: RGD156888
Sample Tissue: Rat Pancreas lysates
Antibody Dilution: 1.µg/ml

Please note: All products are 'FOR RESEARCH USE ONLY. NOT FOR USE IN DIAGNOSTIC OR THERAPEUTIC PROCEDURES'.