

# Cdk5r1 antibody - C-terminal region

Rabbit Polyclonal Antibody

Catalog # AI10175

## Product Information

---

<b>Application</b>	WB
<b>Primary Accession</b>	<a href="#">P61809</a>
<b>Other Accession</b>	<a href="#">NM_009871</a> , <a href="#">NP_034001</a>
<b>Reactivity</b>	Human, Mouse, Rat, Dog, Horse, Bovine
<b>Predicted</b>	Human, Mouse, Pig, Dog, Guinea Pig
<b>Host</b>	Rabbit
<b>Clonality</b>	Polyclonal
<b>Calculated MW</b>	34031

## Additional Information

---

<b>Gene ID</b>	12569
<b>Alias Symbol</b>	Cdk5r, D11Bwg0379e, p25, p35
<b>Other Names</b>	Cyclin-dependent kinase 5 activator 1, CDK5 activator 1, Cyclin-dependent kinase 5 regulatory subunit 1, TPKII regulatory subunit, Cyclin-dependent kinase 5 activator 1, p35, p35, Cyclin-dependent kinase 5 activator 1, p25, p25, Tau protein kinase II 23 kDa subunit, p23, Cdk5r1, Cdk5r, Nck5a
<b>Format</b>	Liquid. Purified antibody supplied in 1x PBS buffer with 0.09% (w/v) sodium azide and 2% sucrose.
<b>Reconstitution &amp; Storage</b>	Add 50 ul of distilled water. Final anti-Cdk5r1 antibody concentration is 1 mg/ml in PBS buffer with 2% sucrose. For longer periods of storage, store at 20°C. Avoid repeat freeze-thaw cycles.
<b>Precautions</b>	Cdk5r1 antibody - C-terminal region is for research use only and not for use in diagnostic or therapeutic procedures.

## Protein Information

---

<b>Name</b>	Cdk5r1
<b>Synonyms</b>	Cdk5r, Nck5a
<b>Function</b>	p35 is a neuron specific activator of CDK5. The complex p35/CDK5 is required for neurite outgrowth and cortical lamination. Involved in dendritic spine morphogenesis by mediating the EFNA1-EPHA4 signaling. Activator of TPKII. The complex p35/CDK5 participates in the regulation of the circadian clock by modulating the function of CLOCK protein: phosphorylates CLOCK at 'Thr-451' and 'Thr-461' and regulates the transcriptional activity of the

CLOCK-BMAL1 heterodimer in association with altered stability and subcellular distribution.

**Cellular Location**

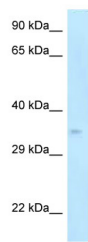
[Cyclin-dependent kinase 5 activator 1, p35]: Cell membrane {ECO:0000250|UniProtKB:Q15078}; Lipid-anchor {ECO:0000250|UniProtKB:Q15078}; Cytoplasmic side {ECO:0000250|UniProtKB:Q15078}. Cell projection, neuron projection {ECO:0000250|UniProtKB:Q15078}. Note=In the primary cortical neurons, p35 is present in the peripheries and nerve terminals {ECO:0000250|UniProtKB:Q15078}

**Tissue Location**

Brain and neuron specific.

**Images**

---



WB Suggested Anti-Cdk5r1 Antibody  
Titration: 1. µg/ml  
Positive Control: Mouse Pancreas

Please note: All products are 'FOR RESEARCH USE ONLY. NOT FOR USE IN DIAGNOSTIC OR THERAPEUTIC PROCEDURES'.