

Bcl2l2 Antibody - C-terminal region

Rabbit Polyclonal Antibody

Catalog # AI10180

Product Information

Application	WB
Primary Accession	P70345
Other Accession	NM_007537 , NP_031563
Reactivity	Human, Mouse, Rat, Pig, Dog, Horse, Bovine
Predicted	Rat, Pig, Dog
Host	Rabbit
Clonality	Polyclonal
Calculated MW	20790

Additional Information

Gene ID	12050
Alias Symbol	AW048834, Bcl-w, Gtrgal2, Gtrosa41, bclw, c98
Other Names	Bcl-2-like protein 2, Bcl2-L-2, Apoptosis regulator Bcl-W, c98, Bcl2l2, Bclw, Kiaa0271
Format	Liquid. Purified antibody supplied in 1x PBS buffer with 0.09% (w/v) sodium azide and 2% sucrose.
Reconstitution & Storage	Add 50 ul of distilled water. Final anti-Bcl2l2 antibody concentration is 1 mg/ml in PBS buffer with 2% sucrose. For longer periods of storage, store at 20°C. Avoid repeat freeze-thaw cycles.
Precautions	Bcl2l2 Antibody - C-terminal region is for research use only and not for use in diagnostic or therapeutic procedures.

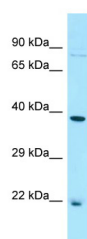
Protein Information

Name	Bcl2l2
Synonyms	Bclw, Kiaa0271
Function	Promotes cell survival. Blocks dexamethasone-induced apoptosis. Mediates survival of postmitotic Sertoli cells by suppressing death-promoting activity of BAX.
Cellular Location	Mitochondrion membrane; Peripheral membrane protein. Note=Loosely associated with the mitochondrial membrane in healthy cells. During apoptosis, tightly bound to the membrane (By similarity).

Tissue Location

Expressed in almost all myeloid cell lines and in a wide range of tissues, with highest levels in brain, colon, and salivary gland

Images



WB Suggested Anti-Bcl2l2 Antibody

Titration: 1. $\mu\text{g/ml}$

Positive Control: Mouse Testis

Please note: All products are 'FOR RESEARCH USE ONLY. NOT FOR USE IN DIAGNOSTIC OR THERAPEUTIC PROCEDURES'.