

CYR61 Antibody - middle region

Rabbit Polyclonal Antibody

Catalog # AI10184

Product Information

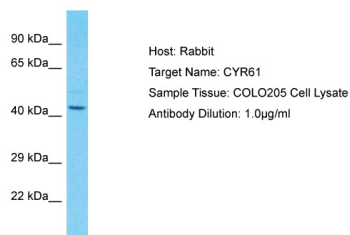
Application	WB
Primary Accession	Q6FI18
Other Accession	NM_001554 , NP_001545
Reactivity	Human, Mouse, Rat, Zebrafish, Pig, Dog, Horse, Bovine
Predicted	Dog
Host	Rabbit
Clonality	Polyclonal
Calculated MW	41 KDa

Additional Information

Alias Symbol	CCN1, GIG1, IGFBP10
Format	Liquid. Purified antibody supplied in 1x PBS buffer with 0.09% (w/v) sodium azide and 2% sucrose.
Reconstitution & Storage	Add 100 µl of distilled water. Final Anti-CYR61 antibody concentration is 1 mg/ml in PBS buffer with 2% sucrose. For longer periods of storage, store at -20°C. Avoid repeat freeze-thaw cycles.
Precautions	CYR61 Antibody - middle region is for research use only and not for use in diagnostic or therapeutic procedures.

Protein Information

Images



Host: Rabbit
Target Name: CYR61
Sample Tissue: COLO25 Whole cell lysate
S
Antibody Dilution: 3 µg/ml