

# Hand2 antibody - C-terminal region

Rabbit Polyclonal Antibody

Catalog # AI10185

## Product Information

---

<b>Application</b>	WB
<b>Primary Accession</b>	<a href="#">Q61039</a>
<b>Other Accession</b>	<a href="#">NM_010402</a> , <a href="#">NP_034532</a>
<b>Reactivity</b>	Human, Mouse, Rat, Zebrafish, Pig, Dog, Horse, Bovine
<b>Predicted</b>	Human, Mouse, Rat, Zebrafish, Pig, Chicken, Dog, Guinea Pig
<b>Host</b>	Rabbit
<b>Clonality</b>	Polyclonal
<b>Calculated MW</b>	23666

## Additional Information

---

<b>Gene ID</b>	15111
<b>Alias Symbol</b> <b>Other Names</b>	AI225906, AI661148, Ehand2, Hed, Th2, Thing2, bHLHa26, dHAND Heart- and neural crest derivatives-expressed protein 2, Deciduum, heart, autonomic nervous system and neural crest derivatives-expressed protein 2, dHAND, Helix-loop-helix transcription factor expressed in embryo and deciduum, Thing-2, Hand2, Dhand, Hed, Thing2
<b>Format</b>	Liquid. Purified antibody supplied in 1x PBS buffer with 0.09% (w/v) sodium azide and 2% sucrose.
<b>Reconstitution &amp; Storage</b>	Add 50 ul of distilled water. Final anti-Hand2 antibody concentration is 1 mg/ml in PBS buffer with 2% sucrose. For longer periods of storage, store at 20°C. Avoid repeat freeze-thaw cycles.
<b>Precautions</b>	Hand2 antibody - C-terminal region is for research use only and not for use in diagnostic or therapeutic procedures.

## Protein Information

---

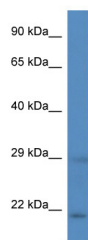
<b>Name</b>	Hand2
<b>Synonyms</b>	Dhand, Hed, Thing2
<b>Function</b>	Essential for cardiac morphogenesis, particularly for the formation of the right ventricle and of the aortic arch arteries. Required for vascular development and regulation of angiogenesis, possibly through a VEGF signaling pathway. Also plays an important role in limb development, particularly in the establishment of anterior- posterior polarization, acting as an upstream regulator of sonic hedgehog (SHH) induction in the limb bud. Is

involved in the development of branchial arches, which give rise to unique structures in the head and neck. Binds DNA on E-box consensus sequence 5'-CANNTG- 3'.

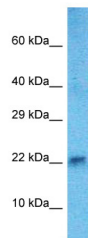
Cellular Location	Nucleus {ECO:0000255   PROSITE-ProRule:PRU00981}.
Tissue Location	Heart and aorta.

Images

---



WB Suggested Anti-Hand2 Antibody  
Titration: 1. µg/ml  
Positive Control: Mouse Heart



Host:Rabbit  
Target Name:Hand2  
Sample Tissue: Mouse Heart lysates  
Antibody Dilution:1.µg/ml

Please note: All products are 'FOR RESEARCH USE ONLY. NOT FOR USE IN DIAGNOSTIC OR THERAPEUTIC PROCEDURES'.