

MTCP1NB antibody - N-terminal region

Rabbit Polyclonal Antibody

Catalog # AI10195

Product Information

Application	WB, IHC
Primary Accession	P56277
Other Accession	NM_001018024 , NP_001018024
Reactivity	Human, Mouse, Rat, Dog, Horse, Bovine
Predicted	Human, Mouse, Rat, Pig, Dog, Guinea Pig, Bovine
Host	Rabbit
Clonality	Polyclonal
Calculated MW	7747

Additional Information

Gene ID	100272147
Alias Symbol Other Names	C6.1B, MGC2069, MTCP1, p8, p8MTCP1, MTCP1NB Cx9C motif-containing protein 4, Mature T-cell proliferation 1 neighbor protein, Mature T-cell proliferation-1 type A, MTCP-1 type A, Protein p8 MTCP-1, p8MTCP1, CMC4, C6.1B, MTCP1, MTCP1NB
Format	Liquid. Purified antibody supplied in 1x PBS buffer with 0.09% (w/v) sodium azide and 2% sucrose.
Reconstitution & Storage	Add 50 ul of distilled water. Final anti-MTCP1NB antibody concentration is 1 mg/ml in PBS buffer with 2% sucrose. For longer periods of storage, store at 20°C. Avoid repeat freeze-thaw cycles.
Precautions	MTCP1NB antibody - N-terminal region is for research use only and not for use in diagnostic or therapeutic procedures.

Protein Information

Name	CMC4
Synonyms	C6.1B, MTCP1, MTCP1NB
Cellular Location	Mitochondrion.
Tissue Location	Expressed in many tissues with a relatively high level in skeletal muscle

Images

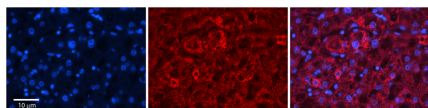


WB Suggested Anti-MTCP1NB Antibody

Titration: 1. µg/ml

Positive Control: 293T Whole Cell

CMC4 is strongly supported by BioGPS gene expression data to be expressed in Human HEK293T cells



Rabbit Anti-MTCP1NB Antibody

Catalog Number: AI1195

Formalin Fixed Paraffin Embedded Tissue: Human Adult Liver

Observed Staining: Cytoplasm in hepatocytes, strong signal resembling mitochondria staining, wide tissue distribution

Primary Antibody

Concentration: 1:1

Secondary Antibody: Donkey anti-Rabbit-Cy3

Secondary Antibody

Concentration: 1:2

Magnification: 2X

Exposure Time: .5 – 2. sec

Protocol located in Reviews and Data.

Please note: All products are 'FOR RESEARCH USE ONLY. NOT FOR USE IN DIAGNOSTIC OR THERAPEUTIC PROCEDURES'.