

Atf3 Antibody - C-terminal region

Rabbit Polyclonal Antibody

Catalog # AI10215

Product Information

Application	WB
Primary Accession	Q60765
Other Accession	NM_007498 , NP_031524
Reactivity	Human, Mouse, Rat, Zebrafish, Pig, Dog, Horse, Bovine
Predicted	Human, Mouse, Rat, Zebrafish, Pig, Dog, Guinea Pig, Bovine
Host	Rabbit
Clonality	Polyclonal
Calculated MW	20722

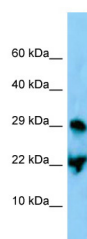
Additional Information

Gene ID	11910
Alias Symbol	LRG-21
Other Names	Cyclic AMP-dependent transcription factor ATF-3, cAMP-dependent transcription factor ATF-3, Activating transcription factor 3, Transcription factor LRG-21, Atf3
Format	Liquid. Purified antibody supplied in 1x PBS buffer with 0.09% (w/v) sodium azide and 2% sucrose.
Reconstitution & Storage	Add 50 ul of distilled water. Final anti-Atf3 antibody concentration is 1 mg/ml in PBS buffer with 2% sucrose. For longer periods of storage, store at 20°C. Avoid repeat freeze-thaw cycles.
Precautions	Atf3 Antibody - C-terminal region is for research use only and not for use in diagnostic or therapeutic procedures.

Protein Information

Name	Atf3 {ECO:0000303 PubMed:11916968, ECO:0000312 MGI:MGI:109384}
Function	This protein binds the cAMP response element (CRE) (consensus: 5'-GTGACGT[AC][AG]-3'), a sequence present in many viral and cellular promoters (PubMed: 11916968). Represses transcription from promoters with ATF sites (PubMed: 11916968). It may repress transcription by stabilizing the binding of inhibitory cofactors at the promoter (By similarity).
Cellular Location	Nucleus {ECO:0000250 UniProtKB:P18847, ECO:0000255 PROSITE-ProRule:PRU00978}

Images



WB Suggested Anti-Atf3 Antibody
Titration: 1. $\mu\text{g/ml}$
Positive Control: Mouse Stomach

Please note: All products are 'FOR RESEARCH USE ONLY. NOT FOR USE IN DIAGNOSTIC OR THERAPEUTIC PROCEDURES'.