

# Onecut1 antibody - C-terminal region

Rabbit Polyclonal Antibody

Catalog # AI10290

## Product Information

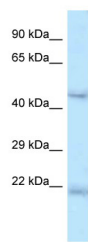
<b>Application</b>	WB, IHC
<b>Primary Accession</b>	<a href="#">O08755</a>
<b>Other Accession</b>	<a href="#">NM_008262</a> , <a href="#">NP_032288</a>
<b>Reactivity</b>	Human, Mouse, Rat, Zebrafish, Pig, Dog, Horse, Bovine
<b>Predicted</b>	Human, Mouse, Rat, Zebrafish, Pig, Chicken, Dog, Guinea Pig, Bovine
<b>Host</b>	Rabbit
<b>Clonality</b>	Polyclonal
<b>Calculated MW</b>	50952

## Additional Information

<b>Gene ID</b>	15379
<b>Alias Symbol</b> <b>Other Names</b>	D9Ert423e, Hfh12, Hnf6, Hnf6b, OC-1, Oc1, HNF-6 Hepatocyte nuclear factor 6, HNF-6, One cut domain family member 1, One cut homeobox 1, Onecut1, Hnf6, Hnf6a
<b>Format</b>	Liquid. Purified antibody supplied in 1x PBS buffer with 0.09% (w/v) sodium azide and 2% sucrose.
<b>Reconstitution &amp; Storage</b>	Add 50 ul of distilled water. Final anti-Onecut1 antibody concentration is 1 mg/ml in PBS buffer with 2% sucrose. For longer periods of storage, store at 20°C. Avoid repeat freeze-thaw cycles.
<b>Precautions</b>	Onecut1 antibody - C-terminal region is for research use only and not for use in diagnostic or therapeutic procedures.

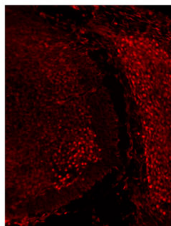
## Protein Information

<b>Name</b>	Onecut1
<b>Synonyms</b>	Hnf6, Hnf6a
<b>Function</b>	Transcriptional activator. Binds the consensus sequence 5'-DHWATTGAYTWWD-3' on a variety of gene promoters such as those of HNF3B and TTR. Important for liver genes transcription. Stimulates the expression of Onecut3 in the developing endoderm.
<b>Cellular Location</b>	Nucleus.



Onecut1 antibody - C-terminal region (AI129) validated by WB using Mouse Liver lysate at 1.µg/ml.

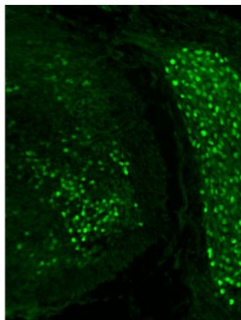
Onecut1



See Immunohistochemistry 1 Data and Customer Feedback tab for more information.

Sample Type: Frozen section of mouse embryo at et12.5  
Primary Dilution:1:5  
Secondary Dilution:1:2  
Antigen Retrieval method: Citrate buffer (pH=6)  
Image  
Submitted by: Frédéric Clotman  
Université catholique de Louvain

Onecut1



Immunohistochemistry with mouse embryo tissue

Please note: All products are 'FOR RESEARCH USE ONLY. NOT FOR USE IN DIAGNOSTIC OR THERAPEUTIC PROCEDURES'.