

LMX1A antibody - middle region

Rabbit Polyclonal Antibody

Catalog # AI10299

Product Information

Application	WB, IHC
Primary Accession	Q8TE12
Other Accession	NM_177398 , NP_796372
Reactivity	Human, Mouse, Rat, Dog, Horse, Bovine
Predicted	Human, Mouse, Rat, Chicken, Dog, Bovine
Host	Rabbit
Clonality	Polyclonal
Calculated MW	42747

Additional Information

Gene ID	4009
Alias Symbol	LMX-1, LMX1, LMX1.1, MGC87616
Other Names	LIM homeobox transcription factor 1-alpha, LIM/homeobox protein 1.1, LMX-1.1, LIM/homeobox protein LMX1A, LMX1A
Format	Liquid. Purified antibody supplied in 1x PBS buffer with 0.09% (w/v) sodium azide and 2% sucrose.
Reconstitution & Storage	Add 50 ul of distilled water. Final anti-LMX1A antibody concentration is 1 mg/ml in PBS buffer with 2% sucrose. For longer periods of storage, store at 20°C. Avoid repeat freeze-thaw cycles.
Precautions	LMX1A antibody - middle region is for research use only and not for use in diagnostic or therapeutic procedures.

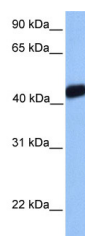
Protein Information

Name	LMX1A
Function	Acts as a transcriptional activator by binding to an A/T-rich sequence, the FLAT element, in the insulin gene promoter. Required for development of the roof plate and, in turn, for specification of dorsal cell fates in the CNS and developing vertebrae (By similarity).
Cellular Location	Nucleus {ECO:0000255 PROSITE-ProRule:PRU00108}.
Tissue Location	Isoform 1 is expressed in many tissues. Not found in heart, liver, spleen and testis. Relatively highly expressed in fetal brain. Isoform LMX1A-4AB is expressed in testis

References

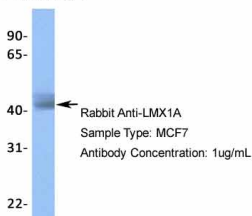
Millen, K.J., et al., (2004) Dev. Biol. 270 (2), 382-392
Reconstitution and Storage: For short term use, store at 2-8°C up to 1 week. For long term storage, store at -20°C in small aliquots to prevent freeze-thaw cycles.

Images



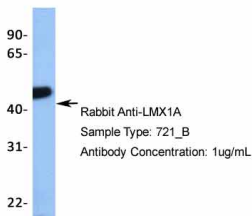
WB Suggested Anti-LMX1A Antibody
Titration: 1 µg/ml
Positive Control: 721_B Whole Cell

LMX1A

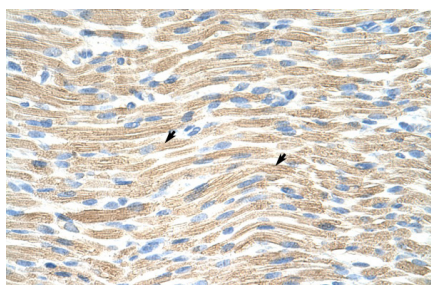


Host: Rabbit
Target Name: LMX1A
Sample Tissue: MCF7
Antibody Dilution: 1 µg/ml

LMX1A



Host: Rabbit
Target Name: TRIM1
Sample Tissue: 721_B
Antibody Dilution: 1 µg/ml



Rabbit Anti-LMX1A Antibody

Catalog Number: AI10299

Paraffin Embedded Tissue: Human Muscle

Cellular Data: Skeletal muscle cells

Antibody Concentration: 4.-8. µg/ml

Magnification: 4X

Please note: All products are 'FOR RESEARCH USE ONLY. NOT FOR USE IN DIAGNOSTIC OR THERAPEUTIC PROCEDURES'.