

NAB1 antibody - N-terminal region

Rabbit Polyclonal Antibody

Catalog # AI10304

Product Information

Application	WB, IHC
Primary Accession	Q13506
Other Accession	NM_005966 , NP_005957
Reactivity	Human, Mouse, Rat, Zebrafish, Dog, Bovine
Predicted	Human, Mouse, Rat, Zebrafish, Chicken, Dog, Bovine
Host	Rabbit
Clonality	Polyclonal
Calculated MW	54401

Additional Information

Gene ID	4664
Other Names	NGFI-A-binding protein 1, EGR-1-binding protein 1, Transcriptional regulatory protein p54, NAB1
Format	Liquid. Purified antibody supplied in 1x PBS buffer with 0.09% (w/v) sodium azide and 2% sucrose.
Reconstitution & Storage	Add 50 ul of distilled water. Final anti-NAB1 antibody concentration is 1 mg/ml in PBS buffer with 2% sucrose. For longer periods of storage, store at 20°C. Avoid repeat freeze-thaw cycles.
Precautions	NAB1 antibody - N-terminal region is for research use only and not for use in diagnostic or therapeutic procedures.

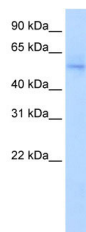
Protein Information

Name	NAB1
Function	Acts as a transcriptional repressor for zinc finger transcription factors EGR1 and EGR2.
Cellular Location	Nucleus.
Tissue Location	Isoform Short is found in myeloid leukemia cell line KG-1

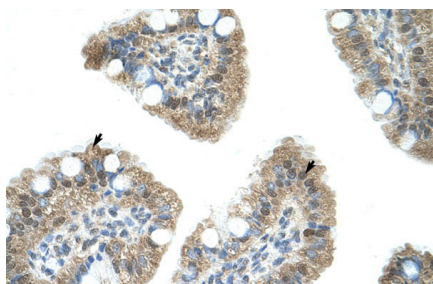
References

Brandenberger,R., (2004) Nat. Biotechnol. 22 (6), 707-716
Reconstitution and Storage:For short term use, store at 2-8C up to 1 week. For long term storage, store at -20C in small aliquots to prevent freeze-thaw cycles.
Publications:Shimoyamada, H. et al. Early growth response-1 induces and enhances vascular endothelial growth factor-A expression in lung cancer cells. Am. J. Pathol. 177, 70-83 (2010).
WB, Bovine, Human, Mouse, Horse, Rabbit, Rat, Guinea pig, Dog, Zebrafish20489156

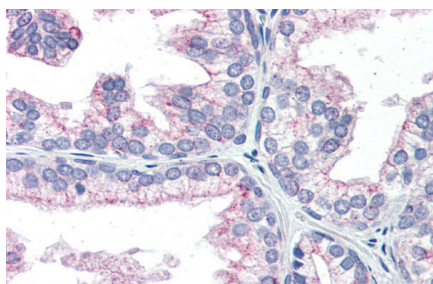
Images



WB Suggested Anti-NAB1 Antibody Titration: .2-1 ug/ml
Positive Control: Transfected 293T



Human Intestine



Immunohistochemistry with Human Prostate lysate tissue at an antibody concentration of 5.ug/ml using anti-NAB1 antibody (AI134)

Please note: All products are 'FOR RESEARCH USE ONLY. NOT FOR USE IN DIAGNOSTIC OR THERAPEUTIC PROCEDURES'.