

# Ywhae antibody - C-terminal region

Rabbit Polyclonal Antibody

Catalog # AI10309

## Product Information

---

<b>Application</b>	WB, IHC
<b>Primary Accession</b>	<a href="#">P62259</a>
<b>Other Accession</b>	<a href="#">NM_009536</a> , <a href="#">NP_033562</a>
<b>Reactivity</b>	Human, Mouse, Rat, Zebrafish, Bovine
<b>Predicted</b>	Mouse, Zebrafish, Chicken, Dog
<b>Host</b>	Rabbit
<b>Clonality</b>	Polyclonal
<b>Calculated MW</b>	29174

## Additional Information

---

<b>Gene ID</b>	22627
<b>Alias Symbol</b>	AU019196
<b>Other Names</b>	14-3-3 protein epsilon, 14-3-3E, Ywhae
<b>Format</b>	Liquid. Purified antibody supplied in 1x PBS buffer with 0.09% (w/v) sodium azide and 2% sucrose.
<b>Reconstitution &amp; Storage</b>	Add 50 ul of distilled water. Final anti-Ywhae antibody concentration is 1 mg/ml in PBS buffer with 2% sucrose. For longer periods of storage, store at 20°C. Avoid repeat freeze-thaw cycles.
<b>Precautions</b>	Ywhae antibody - C-terminal region is for research use only and not for use in diagnostic or therapeutic procedures.

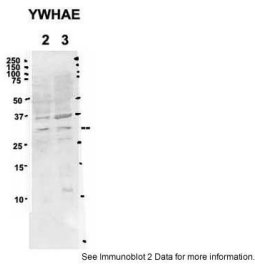
## Protein Information

---

<b>Name</b>	Ywhae
<b>Function</b>	Adapter protein implicated in the regulation of a large spectrum of both general and specialized signaling pathways. Binds to a large number of partners, usually by recognition of a phosphoserine or phosphothreonine motif. Binding generally results in the modulation of the activity of the binding partner. Positively regulates phosphorylated protein HSF1 nuclear export to the cytoplasm.
<b>Cellular Location</b>	Nucleus {ECO:0000250 UniProtKB:P62258}. Cytoplasm {ECO:0000250 UniProtKB:P62258}. Melanosome {ECO:0000250 UniProtKB:P62258}



Ywhae antibody - C-terminal region (AI139) validated by WB using Mouse Kidney lysate at 1.ug/ml.



Sample Type: 2. mouse brain extracts (8ug)  
3. rat brain extract (8ug)  
Primary Antibody Dilution: 2ug/ml  
Secondary Antibody: IRDye 8CW goat anti-rabbit from Li-COR Bioscience  
Secondary Antibody Dilution: 1: 2,  
Image Submitted by: Yuzhi Chen  
University of Arkansas for Medical Science

