

# DVL1 antibody - middle region

Rabbit Polyclonal Antibody

Catalog # AI10310

## Product Information

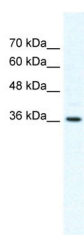
<b>Application</b>	WB
<b>Primary Accession</b>	<a href="#">A6NKG8</a>
<b>Other Accession</b>	<a href="#">NM_004421</a> , <a href="#">EAW56226</a>
<b>Reactivity</b>	Human, Mouse, Rat, Zebrafish, Dog, Bovine
<b>Predicted</b>	Human, Mouse, Rat, Zebrafish, Pig, Chicken, Dog, Bovine
<b>Host</b>	Rabbit
<b>Clonality</b>	Polyclonal
<b>Calculated MW</b>	38 kDa

## Additional Information

<b>Alias Symbol</b>	DVL, MGC54245, DVL1L1
<b>Format</b>	Liquid. Purified antibody supplied in 1x PBS buffer with 0.09% (w/v) sodium azide and 2% sucrose.
<b>Reconstitution &amp; Storage</b>	Add 100 ul of distilled water. Final anti-DVL1 antibody concentration is 1 mg/ml in PBS buffer with 2% sucrose. For longer periods of storage, store at 20°C. Avoid repeat freeze-thaw cycles.
<b>Precautions</b>	DVL1 antibody - middle region is for research use only and not for use in diagnostic or therapeutic procedures.

## Protein Information

## Images



WB Suggested Anti-DVL1 Antibody Titration: 2.5ug/ml  
Positive Control: HepG2 cell lysate

DVL1 is supported by BioGPS gene expression data to be expressed in HepG2