

MYF6 antibody - N-terminal region

Rabbit Polyclonal Antibody

Catalog # AI10315

Product Information

Application	WB, IHC
Primary Accession	P23409
Other Accession	NM_002469 , NP_002460
Reactivity	Human, Mouse, Rat, Zebrafish, Dog, Bovine
Predicted	Human, Mouse, Rat, Zebrafish, Pig, Chicken, Dog, Bovine
Host	Rabbit
Clonality	Polyclonal
Calculated MW	26953

Additional Information

Gene ID	4618
Alias Symbol	MRF4, CNM3, myf-6, bHLHc4
Other Names	Myogenic factor 6, Myf-6, Class C basic helix-loop-helix protein 4, bHLHc4, Muscle-specific regulatory factor 4, MYF6, BHLHC4, MRF4
Format	Liquid. Purified antibody supplied in 1x PBS buffer with 0.09% (w/v) sodium azide and 2% sucrose.
Reconstitution & Storage	Add 50 ul of distilled water. Final anti-MYF6 antibody concentration is 1 mg/ml in PBS buffer with 2% sucrose. For longer periods of storage, store at 20°C. Avoid repeat freeze-thaw cycles.
Precautions	MYF6 antibody - N-terminal region is for research use only and not for use in diagnostic or therapeutic procedures.

Protein Information

Name	MYF6
Synonyms	BHLHC4, MRF4
Function	Involved in muscle differentiation (myogenic factor). Induces fibroblasts to differentiate into myoblasts. Probable sequence specific DNA-binding protein.
Cellular Location	Nucleus.
Tissue Location	Skeletal muscle.

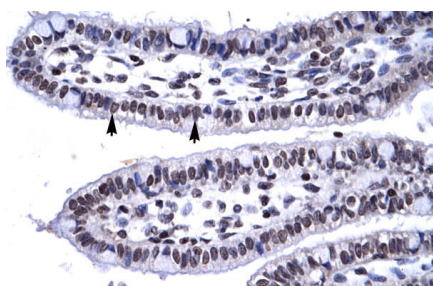
References

Roy, K., et al., (2002) J. Biol. Chem. 277 (37), 33818-33824
Reconstitution and Storage: For short term use, store at 2-8°C up to 1 week. For long term storage, store at -20°C in small aliquots to prevent freeze-thaw cycles.

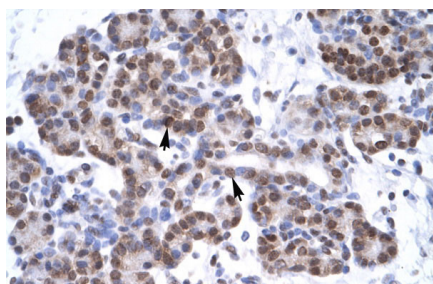
Images



WB Suggested Anti-MYF6 Antibody Titration: .2-1 µg/ml
ELISA Titer: 1:125
Positive Control: Human heart



Human Intestine



Human Pancreas

Please note: All products are 'FOR RESEARCH USE ONLY. NOT FOR USE IN DIAGNOSTIC OR THERAPEUTIC PROCEDURES'.