

KLF3 antibody - N-terminal region

Rabbit Polyclonal Antibody

Catalog # AI10319

Product Information

Application	WB
Primary Accession	P57682
Other Accession	NM_016531 , NP_057615
Reactivity	Human, Mouse, Rat, Dog, Bovine
Predicted	Human, Mouse, Rat, Pig, Chicken, Dog, Bovine
Host	Rabbit
Clonality	Polyclonal
Calculated MW	38829

Additional Information

Gene ID	51274
Alias Symbol	BKLF
Other Names	Krueppel-like factor 3, Basic krueppel-like factor, CACCC-box-binding protein BKLF, TEF-2, KLF3, BKLF
Format	Liquid. Purified antibody supplied in 1x PBS buffer with 0.09% (w/v) sodium azide and 2% sucrose.
Reconstitution & Storage	Add 100 ul of distilled water. Final anti-KLF3 antibody concentration is 1 mg/ml in PBS buffer with 2% sucrose. For longer periods of storage, store at 20°C. Avoid repeat freeze-thaw cycles.
Precautions	KLF3 antibody - N-terminal region is for research use only and not for use in diagnostic or therapeutic procedures.

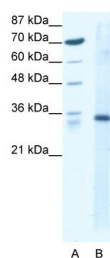
Protein Information

Name	KLF3
Synonyms	BKLF
Function	Binds to the CACCC box of erythroid cell-expressed genes. May play a role in hematopoiesis (By similarity).
Cellular Location	Nucleus.

References

Perdomo,J., et al., (2005) Mol. Cell. Biol. 25 (4), 1549-1559
Reconstitution and Storage: For short term use, store at 2-8C up to 1 week. For long term storage, store at -20C in small aliquots to prevent freeze-thaw cycles.

Images



WB Suggested Anti-KLF3 Antibody Titration: 1.25ug/ml
Positive Control: HepG2 cell lysate

KLF3 is supported by BioGPS gene expression data to be expressed in HepG2

Please note: All products are 'FOR RESEARCH USE ONLY. NOT FOR USE IN DIAGNOSTIC OR THERAPEUTIC PROCEDURES'.