

ZNF342 antibody - middle region

Rabbit Polyclonal Antibody

Catalog # AI10325

Product Information

Application	WB
Primary Accession	Q8WUU4
Other Accession	NM_145288 , NP_660331
Reactivity	Human, Mouse, Rat, Dog, Bovine
Predicted	Human, Mouse, Dog, Bovine
Host	Rabbit
Clonality	Polyclonal
Calculated MW	50810

Additional Information

Gene ID	162979
Alias Symbol	ZNF296, ZFP296, ZNF342
Other Names	Zinc finger protein 296, ZFP296, Zinc finger protein 342, ZNF296, ZNF342
Format	Liquid. Purified antibody supplied in 1x PBS buffer with 0.09% (w/v) sodium azide and 2% sucrose.
Reconstitution & Storage	Add 50 ul of distilled water. Final anti-ZNF342 antibody concentration is 1 mg/ml in PBS buffer with 2% sucrose. For longer periods of storage, store at 20°C. Avoid repeat freeze-thaw cycles.
Precautions	ZNF342 antibody - middle region is for research use only and not for use in diagnostic or therapeutic procedures.

Protein Information

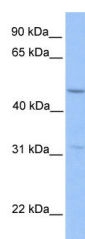
Name	ZNF296
Synonyms	ZNF342
Function	May be a transcriptional corepressor with KLF4.
Cellular Location	Nucleus {ECO:0000250 UniProtKB:E9Q6W4}.

References

Hong,C., (2003) Cancer Res. 63 (22), 7600-7605 Reconstitution and Storage:For short term use, store at 2-8C

up to 1 week. For long term storage, store at -20C in small aliquots to prevent freeze-thaw cycles.

Images



WB Suggested Anti-ZNF342 Antibody Titration: .2-1 ug/ml
Positive Control: HepG2 cell lysate

Please note: All products are 'FOR RESEARCH USE ONLY. NOT FOR USE IN DIAGNOSTIC OR THERAPEUTIC PROCEDURES'.